

## 計算のくふう 10

◎ ひき算のくふう  
(何十をつくる)

15

目指せ100点!



名まえ \_\_\_\_\_

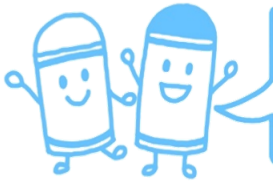
・ くふうして計算しましょう。(各25点)

①  $71 - 4 =$

②  $44 - 6 =$

③  $62 - 5 =$

④  $36 - 8 =$

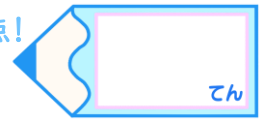


# 計算のくふう 10

◎ ひき算のくふう  
(何十をつくる)

15

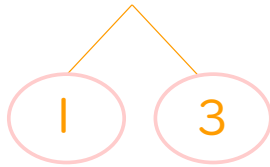
目指せ100点!



名まえ

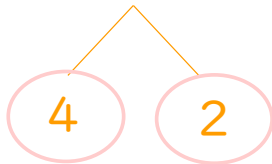
・ くふうして計算しましょう。(各25点)

①  $71 - 4 = 67$



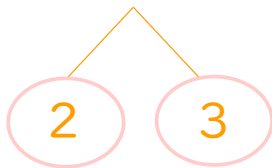
$$\left( \begin{array}{l} 71 - 1 = 70 \\ 70 - 3 = 67 \end{array} \right)$$

②  $44 - 6 = 38$



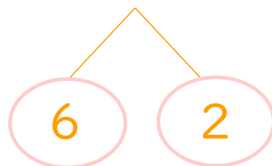
$$\left( \begin{array}{l} 44 - 4 = 40 \\ 40 - 2 = 38 \end{array} \right)$$

③  $62 - 5 = 57$



$$\left( \begin{array}{l} 62 - 2 = 60 \\ 60 - 3 = 57 \end{array} \right)$$

④  $36 - 8 = 28$



$$\left( \begin{array}{l} 36 - 6 = 30 \\ 30 - 2 = 28 \end{array} \right)$$

