

## 計算のくふう！

● 3つのたし算のくふう  
(何十をつくる)

15

目指せ80点!



名まえ \_\_\_\_\_

・ 数をよく見て、くふうして計算しましょう。(各20点)

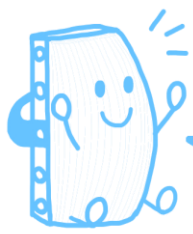
①  $8 + 4 + 46 =$

②  $2 + 58 + 7 =$

③  $15 + 17 + 3 =$

④  $4 + 25 + 5 =$

⑤  $6 + 34 + 12 =$

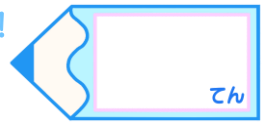


## 計算のくふう！

◎ 3つのたし算のくふう  
(何十をつくる)

15

目指せ80点!



名まえ \_\_\_\_\_

・ 数をよく見て、くふうして計算しましょう。(各20点)

$$\begin{aligned} \textcircled{1} \quad 8 + (4 + 46) &= 8 + 50 \\ &= 58 \end{aligned}$$

$$\begin{aligned} \textcircled{2} \quad (2 + 58) + 7 &= 60 + 7 \\ &= 67 \end{aligned}$$

$$\begin{aligned} \textcircled{3} \quad 15 + (17 + 3) &= 15 + 20 \\ &= 35 \end{aligned}$$

$$\begin{aligned} \textcircled{4} \quad 4 + (25 + 5) &= 4 + 30 \\ &= 34 \end{aligned}$$

$$\begin{aligned} \textcircled{5} \quad (6 + 34) + 12 &= 40 + 12 \\ &= 52 \end{aligned}$$