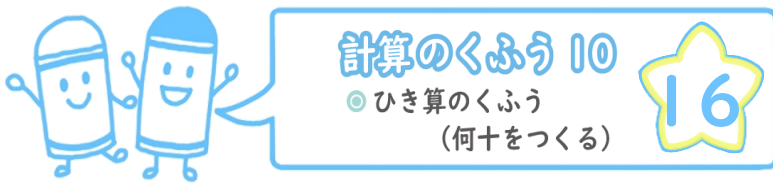


目指せ100点!



名まえ



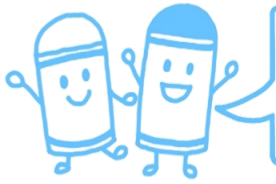
・ くふうして計算しましょう。(各25点)

① $33 - 7 =$

② $27 - 9 =$

③ $41 - 4 =$

④ $52 - 6 =$

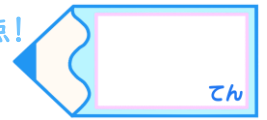


計算のくふう 10

◎ ひき算のくふう
(何十をつくる)

16

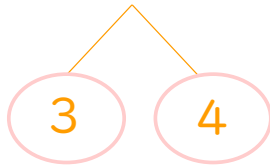
目指せ100点!



名まえ

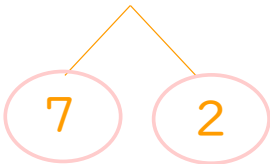
・ くふうして計算しましょう。(各25点)

① $33 - 7 = 26$



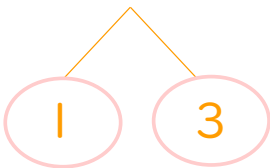
$$\left(\begin{array}{l} 33 - 3 = 30 \\ 30 - 4 = 26 \end{array} \right)$$

② $27 - 9 = 18$



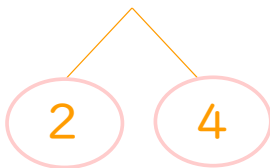
$$\left(\begin{array}{l} 27 - 7 = 20 \\ 20 - 2 = 18 \end{array} \right)$$

③ $41 - 4 = 37$



$$\left(\begin{array}{l} 41 - 1 = 40 \\ 40 - 3 = 37 \end{array} \right)$$

④ $52 - 6 = 46$



$$\left(\begin{array}{l} 52 - 2 = 50 \\ 50 - 4 = 46 \end{array} \right)$$