

# 計算のきまり

## ◎ かけ算のくふう (順番)

日にち：            月            日

名まえ \_\_\_\_\_

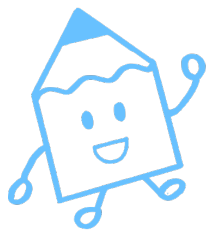
・ 次の式をくふうして計算しましょう。(うすい字はなぞりましょう)

$$\begin{aligned} \textcircled{1} \quad 25 \times 34 \times 8 &= 25 \times 8 \times 34 \\ &= \square \times \\ &= \end{aligned}$$

$$\begin{aligned} \textcircled{2} \quad 31 \times 8 \times 25 &= \square \times \\ &= \square \times \\ &= \end{aligned}$$

$$\begin{aligned} \textcircled{3} \quad 8 \times 24 \times 25 &= \square \times \\ &= \square \times \\ &= \end{aligned}$$

$$\begin{aligned} \textcircled{4} \quad 41 \times 25 \times 8 &= \square \times \\ &= \square \times \\ &= \end{aligned}$$



# 計算のきまり

## ◎ かけ算のくふう (順番)

日にち：            月            日

名まえ \_\_\_\_\_

・ 次の式をくふうして計算しましょう。(うすい字はなぞりましょう)

$$\begin{aligned} \textcircled{1} \quad 25 \times 34 \times 8 &= 25 \times 8 \times 34 \\ &= 200 \times 34 \\ &= 6800 \end{aligned}$$

$$\begin{aligned} \textcircled{2} \quad 31 \times 8 \times 25 &= 8 \times 25 \times 31 \\ &= 200 \times 31 \\ &= 6200 \end{aligned}$$

$$\begin{aligned} \textcircled{3} \quad 8 \times 24 \times 25 &= 8 \times 25 \times 24 \\ &= 200 \times 24 \\ &= 4800 \end{aligned}$$

$$\begin{aligned} \textcircled{4} \quad 41 \times 25 \times 8 &= 25 \times 8 \times 41 \\ &= 200 \times 41 \\ &= 8200 \end{aligned}$$