

# 計算のきまり

## ◎ かけ算のくふう (分配)

日にち：            月            日

名まえ \_\_\_\_\_

・次の式をくふうして計算しましょう。(うすい字はなぞりましょう)

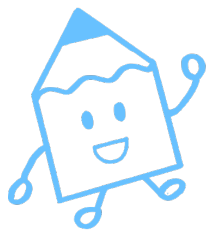
$$\begin{aligned} \textcircled{1} \quad 8 \times 109 &= 8 \times (100 + \quad) \\ &= \quad \times \quad + \quad \times \quad \\ &= \quad + \quad \\ &= \end{aligned}$$

$$\begin{aligned} \textcircled{2} \quad 95 \times 4 &= (\quad - \quad) \times \quad \\ &= \quad \times \quad - \quad \times \quad \\ &= \quad - \quad \\ &= \end{aligned}$$

$$\begin{aligned} \textcircled{3} \quad 9 \times 106 &= \\ &= \\ &= \\ &= \end{aligned}$$

$$\begin{aligned} \textcircled{4} \quad 99 \times 3 &= \\ &= \\ &= \\ &= \end{aligned}$$

$$\begin{aligned} \textcircled{5} \quad 102 \times 6 &= \\ &= \\ &= \\ &= \end{aligned}$$



# 計算のきまり

## ◎ かけ算のくふう (分配)

日にち：            月            日

名まえ \_\_\_\_\_

・次の式をくふうして計算しましょう。(うすい字はなぞりましょう)

$$\begin{aligned} \textcircled{1} \quad 8 \times 109 &= 8 \times (100 + 9) \\ &= 8 \times 100 + 8 \times 9 \\ &= 800 + 72 \\ &= 872 \end{aligned}$$

$$\begin{aligned} \textcircled{2} \quad 95 \times 4 &= (100 - 5) \times 4 \\ &= 100 \times 4 - 5 \times 4 \\ &= 400 - 20 \\ &= 380 \end{aligned}$$

$$\begin{aligned} \textcircled{3} \quad 9 \times 106 &= 9 \times (100 + 6) \\ &= 9 \times 100 + 9 \times 6 \\ &= 900 + 54 \\ &= 954 \end{aligned}$$

$$\begin{aligned} \textcircled{4} \quad 99 \times 3 &= (100 - 1) \times 3 \\ &= 100 \times 3 - 1 \times 3 \\ &= 300 - 3 \\ &= 297 \end{aligned}$$

$$\begin{aligned} \textcircled{5} \quad 102 \times 6 &= (100 + 2) \times 6 \\ &= 100 \times 6 + 2 \times 6 \\ &= 600 + 12 \\ &= 612 \end{aligned}$$