



# 分数のたし算とひき算 14

【約分】分母と分子を同じ数でわる



日にち：            月            日

名まえ \_\_\_\_\_

1  にあてはまる数を書きましょう。(うすい字はなぞりましょう。)

$$\textcircled{1} \quad \frac{6}{10} = \frac{6 \div \boxed{2}}{10 \div \boxed{2}} = \frac{3}{5}$$

$$\textcircled{4} \quad \frac{14}{21} = \frac{14 \div \boxed{\phantom{000}}}{21 \div \boxed{\phantom{000}}} = \frac{2}{3}$$

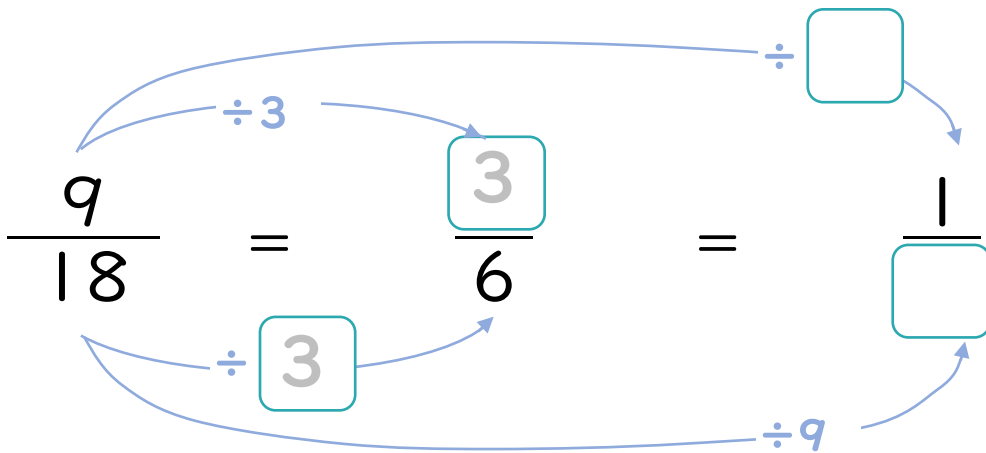
$$\textcircled{2} \quad \frac{8}{36} = \frac{8 \div \boxed{4}}{36 \div \boxed{4}} = \frac{2}{9}$$

$$\textcircled{5} \quad \frac{8}{10} = \frac{8 \div \boxed{\phantom{000}}}{10 \div \boxed{\phantom{000}}} = \frac{4}{5}$$

$$\textcircled{3} \quad \frac{18}{21} = \frac{18 \div \boxed{\phantom{000}}}{21 \div \boxed{\phantom{000}}} = \frac{6}{7}$$

$$\textcircled{6} \quad \frac{12}{27} = \frac{12 \div \boxed{\phantom{000}}}{27 \div \boxed{\phantom{000}}} = \frac{4}{9}$$

2  にあてはまる数を書きましょう。(うすい字はなぞりましょう。)





# 分数のたし算とひき算 14

【約分】分母と分子を同じ数でわる



日にち：            月            日

名まえ \_\_\_\_\_

1  にあてはまる数を書きましょう。(うすい字はなぞりましょう。)

$$\textcircled{1} \quad \frac{6}{27} = \frac{6 \div \boxed{3}}{27 \div \boxed{3}} = \frac{2}{9}$$

$$\textcircled{4} \quad \frac{12}{32} = \frac{12 \div \boxed{\phantom{00}}}{32 \div \boxed{\phantom{00}}} = \frac{3}{8}$$

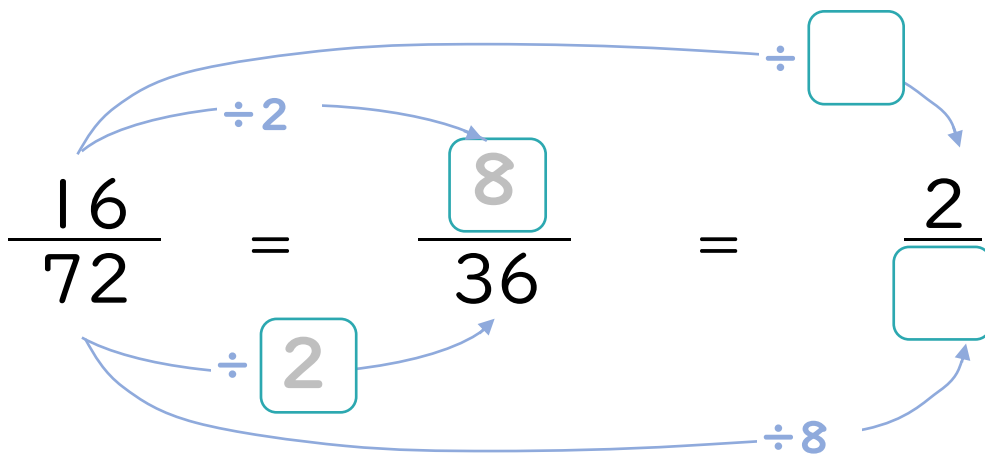
$$\textcircled{2} \quad \frac{20}{28} = \frac{20 \div \boxed{4}}{28 \div \boxed{4}} = \frac{5}{7}$$

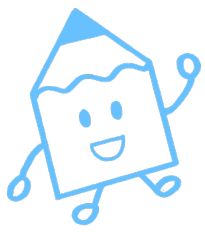
$$\textcircled{5} \quad \frac{12}{42} = \frac{12 \div \boxed{\phantom{00}}}{42 \div \boxed{\phantom{00}}} = \frac{2}{7}$$

$$\textcircled{3} \quad \frac{6}{9} = \frac{6 \div \boxed{\phantom{00}}}{9 \div \boxed{\phantom{00}}} = \frac{2}{3}$$

$$\textcircled{6} \quad \frac{18}{24} = \frac{18 \div \boxed{\phantom{00}}}{24 \div \boxed{\phantom{00}}} = \frac{3}{4}$$

2  にあてはまる数を書きましょう。(うすい字はなぞりましょう。)





# 分数のたし算とひき算 14

【約分】分母と分子を同じ数でわる



日にち： 月 日

名まえ

1  にあてはまる数を書きましょう。(うすい字はなぞりましょう。)

$$\textcircled{1} \quad \frac{15}{24} = \frac{15 \div \boxed{3}}{24 \div \boxed{3}} = \frac{5}{8}$$

$$\textcircled{4} \quad \frac{16}{24} = \frac{16 \div \boxed{\phantom{000}}}{24 \div \boxed{\phantom{000}}} = \frac{2}{3}$$

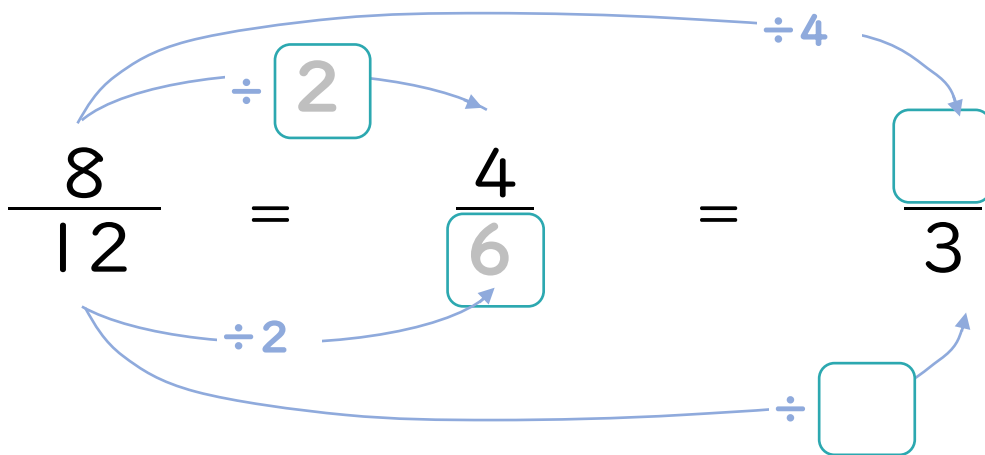
$$\textcircled{2} \quad \frac{8}{18} = \frac{8 \div \boxed{2}}{18 \div \boxed{2}} = \frac{4}{9}$$

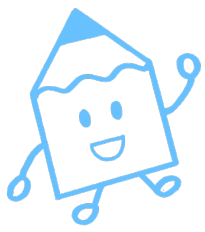
$$\textcircled{5} \quad \frac{18}{48} = \frac{18 \div \boxed{\phantom{000}}}{48 \div \boxed{\phantom{000}}} = \frac{3}{8}$$

$$\textcircled{3} \quad \frac{36}{42} = \frac{36 \div \boxed{\phantom{000}}}{42 \div \boxed{\phantom{000}}} = \frac{6}{7}$$

$$\textcircled{6} \quad \frac{25}{30} = \frac{25 \div \boxed{\phantom{000}}}{30 \div \boxed{\phantom{000}}} = \frac{5}{6}$$

2  にあてはまる数を書きましょう。(うすい字はなぞりましょう。)





# 分数のたし算とひき算 14

【約分】分母と分子を同じ数でわる



日にち：            月            日

名まえ \_\_\_\_\_

1  にあてはまる数を書きましょう。(うすい字はなぞりましょう。)

$$\textcircled{1} \quad \frac{14}{21} = \frac{14 \div \boxed{7}}{21 \div \boxed{7}} = \frac{2}{3}$$

$$\textcircled{4} \quad \frac{10}{12} = \frac{10 \div \boxed{\phantom{00}}}{12 \div \boxed{\phantom{00}}} = \frac{5}{6}$$

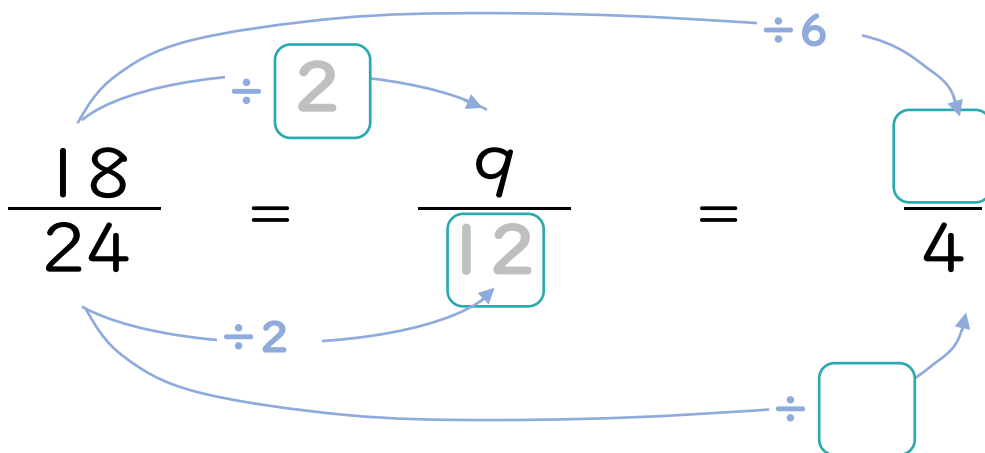
$$\textcircled{2} \quad \frac{15}{24} = \frac{15 \div \boxed{3}}{24 \div \boxed{3}} = \frac{5}{8}$$

$$\textcircled{5} \quad \frac{28}{32} = \frac{28 \div \boxed{\phantom{00}}}{32 \div \boxed{\phantom{00}}} = \frac{7}{8}$$

$$\textcircled{3} \quad \frac{24}{54} = \frac{24 \div \boxed{\phantom{00}}}{54 \div \boxed{\phantom{00}}} = \frac{4}{9}$$

$$\textcircled{6} \quad \frac{32}{40} = \frac{32 \div \boxed{\phantom{00}}}{40 \div \boxed{\phantom{00}}} = \frac{4}{5}$$

2  にあてはまる数を書きましょう。(うすい字はなぞりましょう。)





# 分数のたし算とひき算 14

【約分】分母と分子を同じ数でわる



日にち：            月            日

名まえ

1  にあてはまる数を書きましょう。(うすい字はなぞりましょう。)

$$\textcircled{1} \quad \frac{6}{18} = \frac{6 \div \boxed{6}}{18 \div \boxed{6}} = \frac{1}{3}$$

$$\textcircled{4} \quad \frac{15}{24} = \frac{15 \div \boxed{\phantom{000}}}{24 \div \boxed{\phantom{000}}} = \frac{5}{8}$$

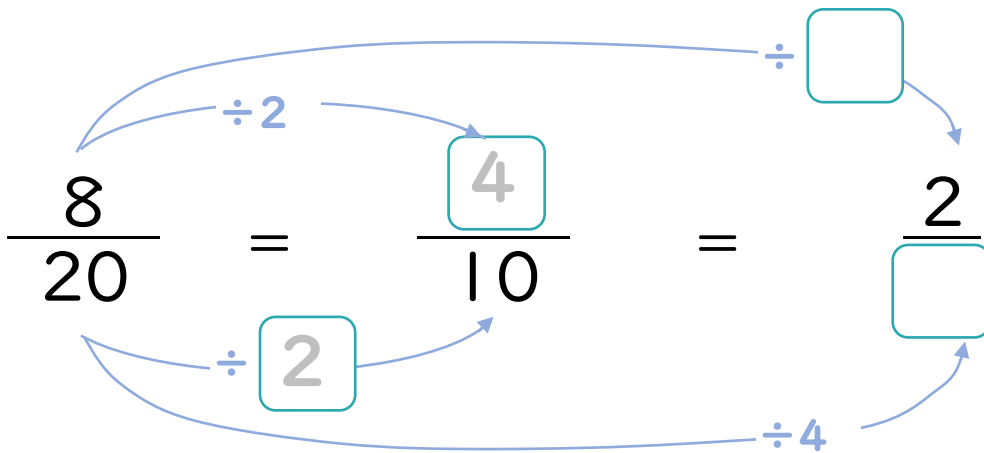
$$\textcircled{2} \quad \frac{8}{16} = \frac{8 \div \boxed{8}}{16 \div \boxed{8}} = \frac{1}{2}$$

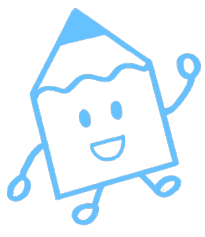
$$\textcircled{5} \quad \frac{12}{20} = \frac{12 \div \boxed{\phantom{000}}}{20 \div \boxed{\phantom{000}}} = \frac{3}{5}$$

$$\textcircled{3} \quad \frac{14}{18} = \frac{14 \div \boxed{\phantom{000}}}{18 \div \boxed{\phantom{000}}} = \frac{7}{9}$$

$$\textcircled{6} \quad \frac{20}{35} = \frac{20 \div \boxed{\phantom{000}}}{35 \div \boxed{\phantom{000}}} = \frac{4}{7}$$

2  にあてはまる数を書きましょう。(うすい字はなぞりましょう。)





# 分数のたし算とひき算 14

【約分】分母と分子を同じ数でわる



日にち：            月            日

名まえ

1  にあてはまる数を書きましょう。(うすい字はなぞりましょう。)

$$\textcircled{1} \quad \frac{14}{21} = \frac{14 \div \boxed{7}}{21 \div \boxed{7}} = \frac{2}{3}$$

$$\textcircled{4} \quad \frac{35}{40} = \frac{35 \div \boxed{\phantom{00}}}{40 \div \boxed{\phantom{00}}} = \frac{7}{8}$$

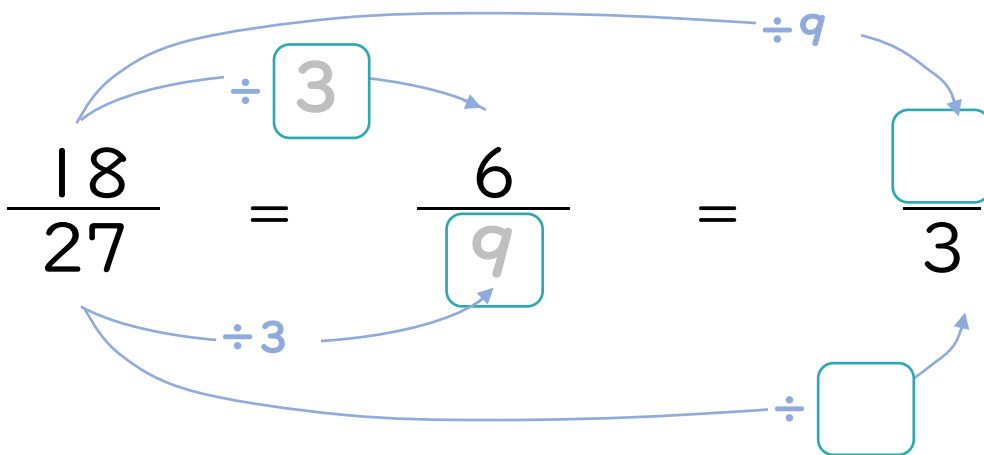
$$\textcircled{2} \quad \frac{20}{24} = \frac{20 \div \boxed{4}}{24 \div \boxed{4}} = \frac{5}{6}$$

$$\textcircled{5} \quad \frac{18}{24} = \frac{18 \div \boxed{\phantom{00}}}{24 \div \boxed{\phantom{00}}} = \frac{3}{4}$$

$$\textcircled{3} \quad \frac{72}{81} = \frac{72 \div \boxed{\phantom{00}}}{81 \div \boxed{\phantom{00}}} = \frac{8}{9}$$

$$\textcircled{6} \quad \frac{16}{72} = \frac{16 \div \boxed{\phantom{00}}}{72 \div \boxed{\phantom{00}}} = \frac{2}{9}$$

2  にあてはまる数を書きましょう。(うすい字はなぞりましょう。)





# 分数のたし算とひき算 14

【約分】分母と分子を同じ数でわる



日にち： 月 日

名まえ

1  にあてはまる数を書きましょう。(うすい字はなぞりましょう。)

$$\textcircled{1} \quad \frac{54}{63} = \frac{54 \div \boxed{9}}{63 \div \boxed{9}} = \frac{6}{7}$$

$$\textcircled{4} \quad \frac{18}{27} = \frac{18 \div \boxed{\phantom{000}}}{27 \div \boxed{\phantom{000}}} = \frac{2}{3}$$

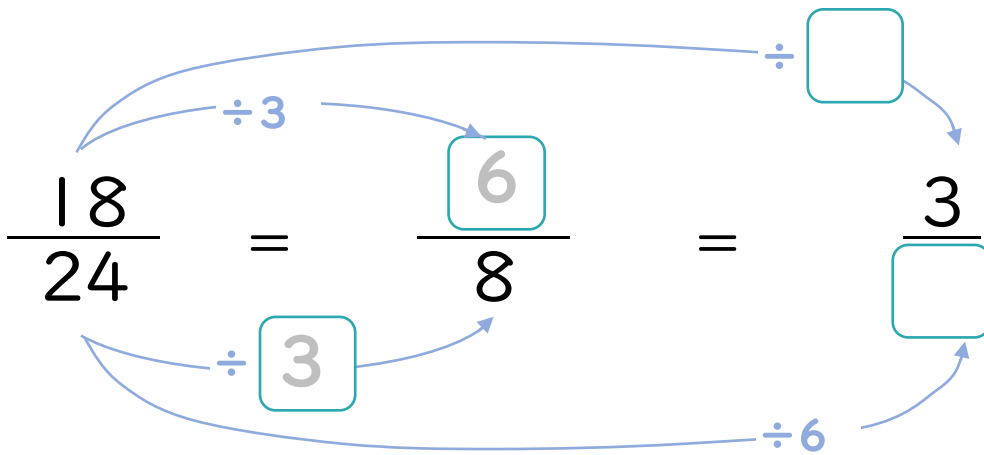
$$\textcircled{2} \quad \frac{8}{18} = \frac{8 \div \boxed{2}}{18 \div \boxed{2}} = \frac{4}{9}$$

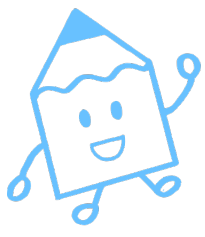
$$\textcircled{5} \quad \frac{30}{42} = \frac{30 \div \boxed{\phantom{000}}}{42 \div \boxed{\phantom{000}}} = \frac{5}{7}$$

$$\textcircled{3} \quad \frac{24}{40} = \frac{24 \div \boxed{\phantom{000}}}{40 \div \boxed{\phantom{000}}} = \frac{3}{5}$$

$$\textcircled{6} \quad \frac{20}{32} = \frac{20 \div \boxed{\phantom{000}}}{32 \div \boxed{\phantom{000}}} = \frac{5}{8}$$

2  にあてはまる数を書きましょう。(うすい字はなぞりましょう。)





# 分数のたし算とひき算 14

【約分】分母と分子を同じ数でわる



日にち：            月            日

名まえ \_\_\_\_\_

1  にあてはまる数を書きましょう。

$$\textcircled{1} \quad \frac{24}{56} = \frac{24 \div \square}{56 \div \square} = \frac{3}{7}$$

$$\textcircled{4} \quad \frac{27}{36} = \frac{27 \div \square}{36 \div \square} = \frac{3}{4}$$

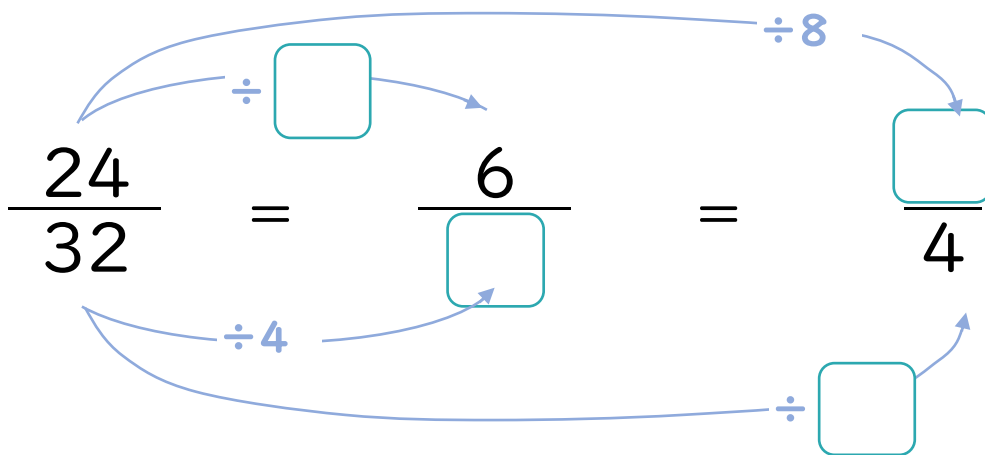
$$\textcircled{2} \quad \frac{24}{54} = \frac{24 \div \square}{54 \div \square} = \frac{4}{9}$$

$$\textcircled{5} \quad \frac{10}{16} = \frac{10 \div \square}{16 \div \square} = \frac{5}{8}$$

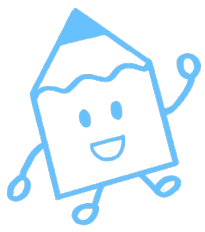
$$\textcircled{3} \quad \frac{12}{30} = \frac{12 \div \square}{30 \div \square} = \frac{2}{5}$$

$$\textcircled{6} \quad \frac{18}{21} = \frac{18 \div \square}{21 \div \square} = \frac{6}{7}$$

2  にあてはまる数を書きましょう。







# 分数のたし算とひき算 14

【約分】分母と分子を同じ数でわる



日にち：            月            日

名まえ \_\_\_\_\_

1  にあてはまる数を書きましょう。

$$\textcircled{1} \quad \frac{32}{36} = \frac{32 \div \square}{36 \div \square} = \frac{8}{9}$$

$$\textcircled{4} \quad \frac{18}{45} = \frac{18 \div \square}{45 \div \square} = \frac{2}{5}$$

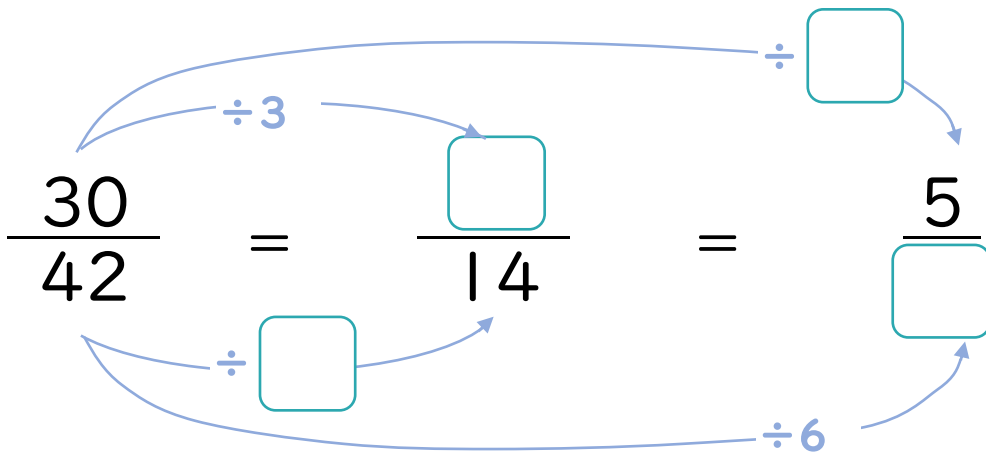
$$\textcircled{2} \quad \frac{35}{42} = \frac{35 \div \square}{42 \div \square} = \frac{5}{6}$$

$$\textcircled{5} \quad \frac{8}{14} = \frac{8 \div \square}{14 \div \square} = \frac{4}{7}$$

$$\textcircled{3} \quad \frac{6}{9} = \frac{6 \div \square}{9 \div \square} = \frac{2}{3}$$

$$\textcircled{6} \quad \frac{18}{48} = \frac{18 \div \square}{48 \div \square} = \frac{3}{8}$$

2  にあてはまる数を書きましょう。





# 分数のたし算とひき算 14

【約分】分母と分子を同じ数でわる



日にち：            月            日

名まえ

1  にあてはまる数を書きましょう。

$$\textcircled{1} \quad \frac{7}{28} = \frac{7 \div \square}{28 \div \square} = \frac{1}{4}$$

$$\textcircled{4} \quad \frac{14}{35} = \frac{14 \div \square}{35 \div \square} = \frac{2}{5}$$

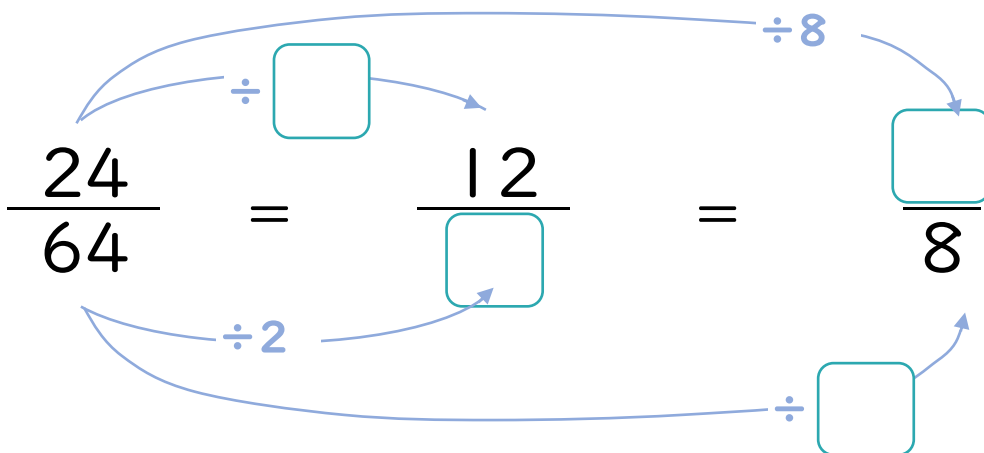
$$\textcircled{2} \quad \frac{12}{16} = \frac{12 \div \square}{16 \div \square} = \frac{3}{4}$$

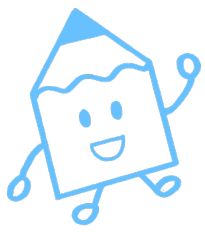
$$\textcircled{5} \quad \frac{21}{24} = \frac{21 \div \square}{24 \div \square} = \frac{7}{8}$$

$$\textcircled{3} \quad \frac{16}{18} = \frac{16 \div \square}{18 \div \square} = \frac{8}{9}$$

$$\textcircled{6} \quad \frac{10}{45} = \frac{10 \div \square}{45 \div \square} = \frac{2}{9}$$

2  にあてはまる数を書きましょう。





# 分数のたし算とひき算 14

【約分】分母と分子を同じ数でわる



日にち：            月            日

名まえ \_\_\_\_\_

1  にあてはまる数を書きましょう。

$$\textcircled{1} \quad \frac{10}{35} = \frac{10 \div \square}{35 \div \square} = \frac{2}{7}$$

$$\textcircled{4} \quad \frac{14}{18} = \frac{14 \div \square}{18 \div \square} = \frac{7}{9}$$

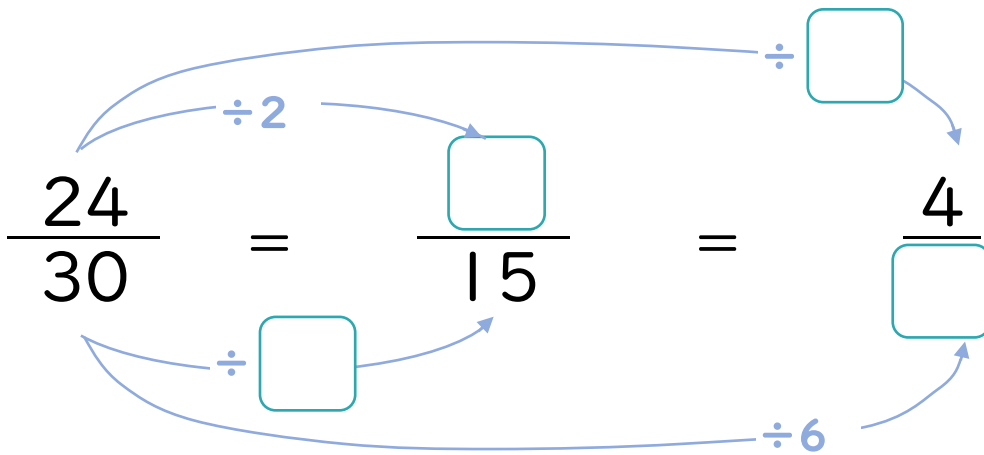
$$\textcircled{2} \quad \frac{27}{72} = \frac{27 \div \square}{72 \div \square} = \frac{3}{8}$$

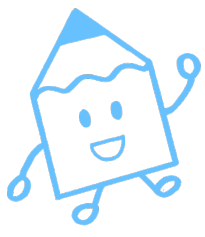
$$\textcircled{5} \quad \frac{20}{32} = \frac{20 \div \square}{32 \div \square} = \frac{5}{8}$$

$$\textcircled{3} \quad \frac{15}{18} = \frac{15 \div \square}{18 \div \square} = \frac{5}{6}$$

$$\textcircled{6} \quad \frac{9}{12} = \frac{9 \div \square}{12 \div \square} = \frac{3}{4}$$

2  にあてはまる数を書きましょう。





# 分数のたし算とひき算 14

【約分】分母と分子を同じ数でわる



日にち：            月            日

名まえ \_\_\_\_\_

1  にあてはまる数を書きましょう。

$$\textcircled{1} \quad \frac{4}{6} = \frac{4 \div \square}{6 \div \square} = \frac{2}{3}$$

$$\textcircled{4} \quad \frac{40}{48} = \frac{40 \div \square}{48 \div \square} = \frac{5}{6}$$

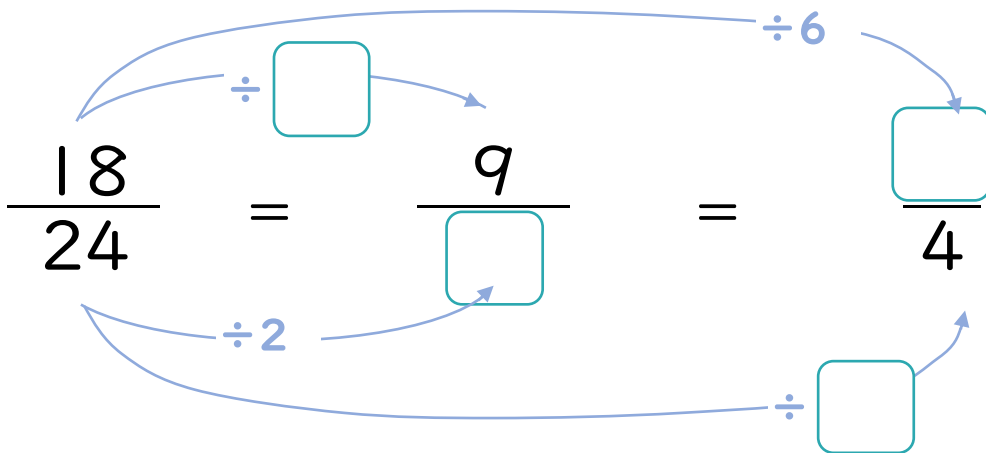
$$\textcircled{2} \quad \frac{40}{45} = \frac{40 \div \square}{45 \div \square} = \frac{8}{9}$$

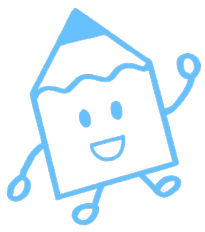
$$\textcircled{5} \quad \frac{8}{10} = \frac{8 \div \square}{10 \div \square} = \frac{4}{5}$$

$$\textcircled{3} \quad \frac{27}{63} = \frac{27 \div \square}{63 \div \square} = \frac{3}{7}$$

$$\textcircled{6} \quad \frac{48}{56} = \frac{48 \div \square}{56 \div \square} = \frac{6}{7}$$

2  にあてはまる数を書きましょう。





# 分数のたし算とひき算 14

●【約分】分母と分子を同じ数でわる

# 13

日にち：            月            日

名まえ \_\_\_\_\_

1  にあてはまる数を書きましょう。

$$\textcircled{1} \quad \frac{6}{14} = \frac{6 \div \square}{14 \div \square} = \frac{3}{7}$$

$$\textcircled{4} \quad \frac{21}{35} = \frac{21 \div \square}{35 \div \square} = \frac{3}{5}$$

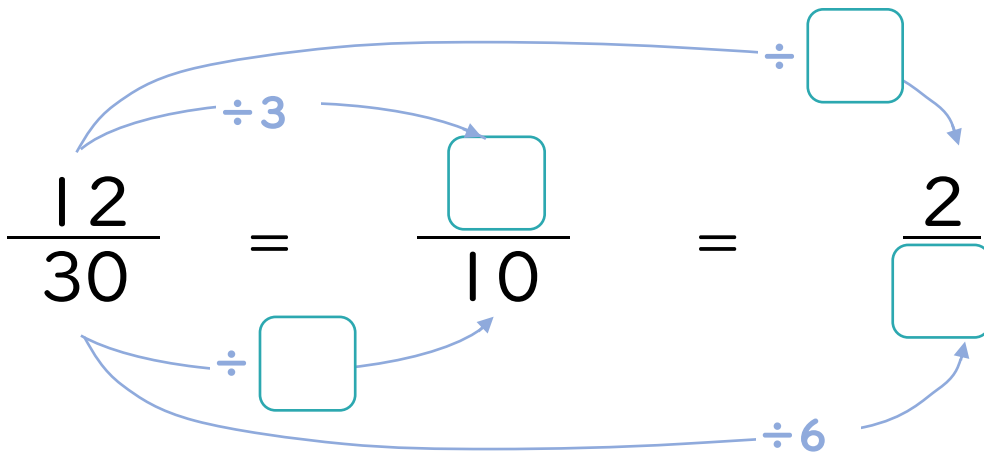
$$\textcircled{2} \quad \frac{32}{40} = \frac{32 \div \square}{40 \div \square} = \frac{4}{5}$$

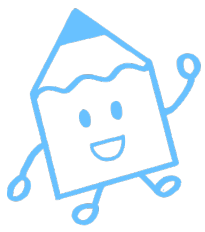
$$\textcircled{5} \quad \frac{12}{54} = \frac{12 \div \square}{54 \div \square} = \frac{2}{9}$$

$$\textcircled{3} \quad \frac{48}{54} = \frac{48 \div \square}{54 \div \square} = \frac{8}{9}$$

$$\textcircled{6} \quad \frac{20}{24} = \frac{20 \div \square}{24 \div \square} = \frac{5}{6}$$

2  にあてはまる数を書きましょう。





# 分数のたし算とひき算 14

【約分】分母と分子を同じ数でわる



日にち：            月            日

名まえ

1  にあてはまる数を書きましょう。

$$\textcircled{1} \quad \frac{10}{16} = \frac{10 \div \square}{16 \div \square} = \frac{5}{8}$$

$$\textcircled{4} \quad \frac{12}{15} = \frac{12 \div \square}{15 \div \square} = \frac{4}{5}$$

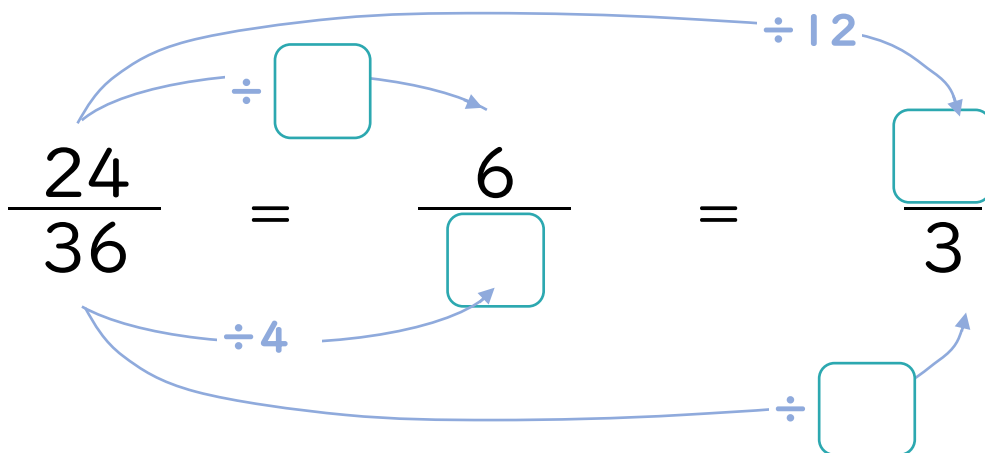
$$\textcircled{2} \quad \frac{21}{27} = \frac{21 \div \square}{27 \div \square} = \frac{7}{9}$$

$$\textcircled{5} \quad \frac{21}{28} = \frac{21 \div \square}{28 \div \square} = \frac{3}{4}$$

$$\textcircled{3} \quad \frac{8}{12} = \frac{8 \div \square}{12 \div \square} = \frac{2}{3}$$

$$\textcircled{6} \quad \frac{15}{24} = \frac{15 \div \square}{24 \div \square} = \frac{5}{8}$$

2  にあてはまる数を書きましょう。



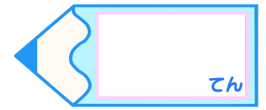


# 分数のたし算とひき算 14

【約分】分母と分子を同じ数でわる

# 15

目指せ80点!



名まえ

1  にあてはまる数を書きましょう。(各10点)

$$\textcircled{1} \quad \frac{9}{15} = \frac{9 \div \square}{15 \div \square} = \frac{3}{5}$$

$$\textcircled{4} \quad \frac{15}{27} = \frac{15 \div \square}{27 \div \square} = \frac{5}{9}$$

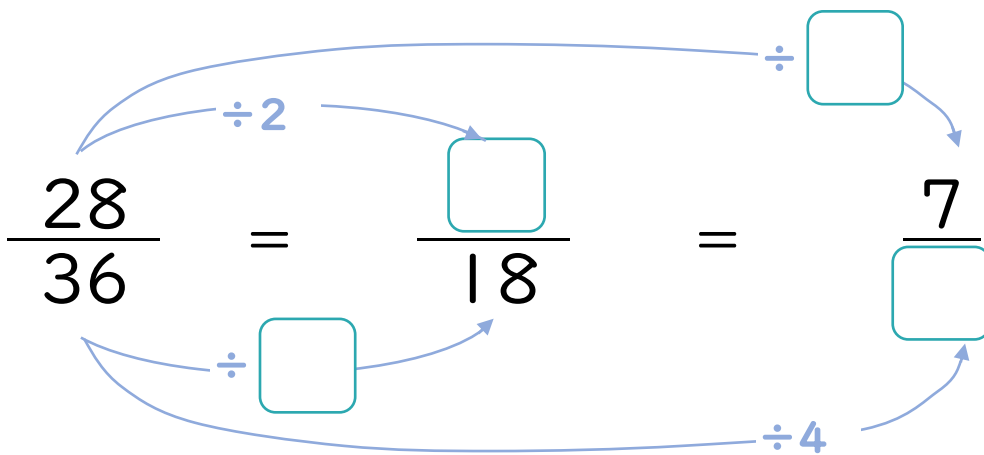
$$\textcircled{2} \quad \frac{24}{28} = \frac{24 \div \square}{28 \div \square} = \frac{6}{7}$$

$$\textcircled{5} \quad \frac{20}{24} = \frac{20 \div \square}{24 \div \square} = \frac{5}{6}$$

$$\textcircled{3} \quad \frac{24}{32} = \frac{24 \div \square}{32 \div \square} = \frac{3}{4}$$

$$\textcircled{6} \quad \frac{14}{16} = \frac{14 \div \square}{16 \div \square} = \frac{7}{8}$$

2  にあてはまる数を書きましょう。(各10点)



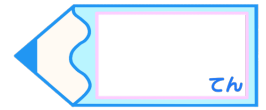


# 分数のたし算とひき算 14

【約分】分母と分子を同じ数でわる

# 16

目指せ80点!



名まえ

1  にあてはまる数を書きましょう。(各10点)

$$\textcircled{1} \quad \frac{15}{27} = \frac{15 \div \square}{27 \div \square} = \frac{5}{9}$$

$$\textcircled{4} \quad \frac{8}{36} = \frac{8 \div \square}{36 \div \square} = \frac{2}{9}$$

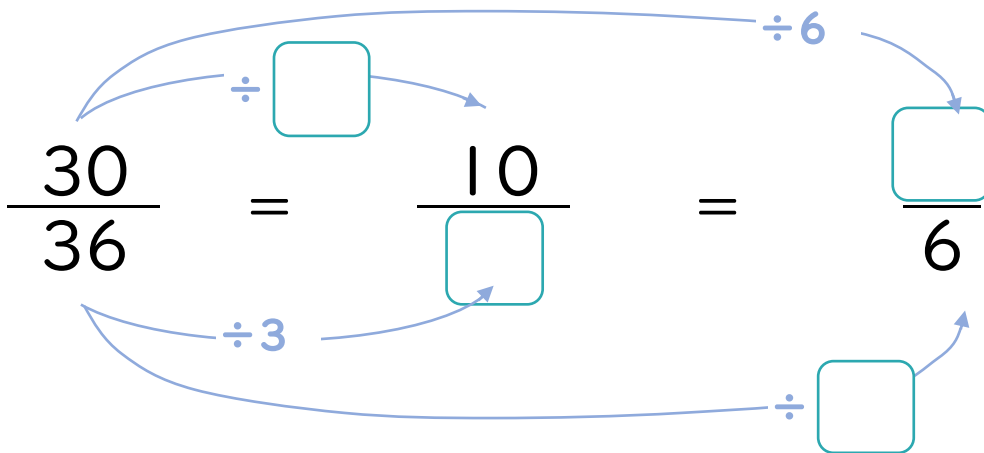
$$\textcircled{2} \quad \frac{16}{56} = \frac{16 \div \square}{56 \div \square} = \frac{2}{7}$$

$$\textcircled{5} \quad \frac{30}{35} = \frac{30 \div \square}{35 \div \square} = \frac{6}{7}$$

$$\textcircled{3} \quad \frac{8}{12} = \frac{8 \div \square}{12 \div \square} = \frac{2}{3}$$

$$\textcircled{6} \quad \frac{18}{48} = \frac{18 \div \square}{48 \div \square} = \frac{3}{8}$$

2  にあてはまる数を書きましょう。(各10点)







# 分数のたし算とひき算 14

【約分】分母と分子を同じ数でわる



日にち：            月            日

名まえ \_\_\_\_\_

1  にあてはまる数を書きましょう。(うすい字はなぞりましょう。)

$$\textcircled{1} \quad \frac{6}{10} = \frac{6 \div \boxed{2}}{10 \div \boxed{2}} = \frac{3}{5}$$

$$\textcircled{4} \quad \frac{14}{21} = \frac{14 \div \boxed{7}}{21 \div \boxed{7}} = \frac{2}{3}$$

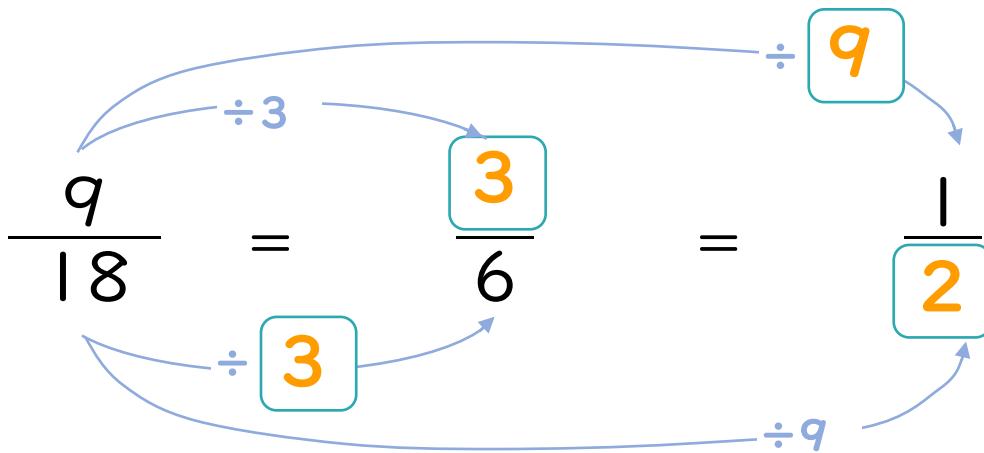
$$\textcircled{2} \quad \frac{8}{36} = \frac{8 \div \boxed{4}}{36 \div \boxed{4}} = \frac{2}{9}$$

$$\textcircled{5} \quad \frac{8}{10} = \frac{8 \div \boxed{2}}{10 \div \boxed{2}} = \frac{4}{5}$$

$$\textcircled{3} \quad \frac{18}{21} = \frac{18 \div \boxed{3}}{21 \div \boxed{3}} = \frac{6}{7}$$

$$\textcircled{6} \quad \frac{12}{27} = \frac{12 \div \boxed{3}}{27 \div \boxed{3}} = \frac{4}{9}$$

2  にあてはまる数を書きましょう。(うすい字はなぞりましょう。)





# 分数のたし算とひき算 14

【約分】分母と分子を同じ数でわる



日にち：            月            日

名まえ

1  にあてはまる数を書きましょう。(うすい字はなぞりましょう。)

$$\textcircled{1} \quad \frac{6}{27} = \frac{6 \div \boxed{3}}{27 \div \boxed{3}} = \frac{2}{9}$$

$$\textcircled{4} \quad \frac{12}{32} = \frac{12 \div \boxed{4}}{32 \div \boxed{4}} = \frac{3}{8}$$

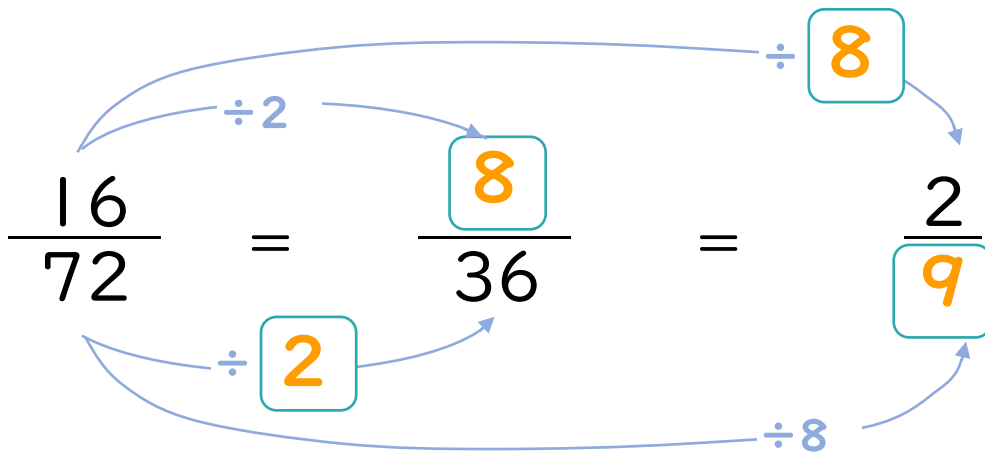
$$\textcircled{2} \quad \frac{20}{28} = \frac{20 \div \boxed{4}}{28 \div \boxed{4}} = \frac{5}{7}$$

$$\textcircled{5} \quad \frac{12}{42} = \frac{12 \div \boxed{6}}{42 \div \boxed{6}} = \frac{2}{7}$$

$$\textcircled{3} \quad \frac{6}{9} = \frac{6 \div \boxed{3}}{9 \div \boxed{3}} = \frac{2}{3}$$

$$\textcircled{6} \quad \frac{18}{24} = \frac{18 \div \boxed{6}}{24 \div \boxed{6}} = \frac{3}{4}$$

2  にあてはまる数を書きましょう。(うすい字はなぞりましょう。)





# 分数のたし算とひき算 14

【約分】分母と分子を同じ数でわる



日にち： 月 日

名まえ

1  にあてはまる数を書きましょう。(うすい字はなぞりましょう。)

$$\textcircled{1} \quad \frac{15}{24} = \frac{15 \div \boxed{3}}{24 \div \boxed{3}} = \frac{5}{8}$$

$$\textcircled{4} \quad \frac{16}{24} = \frac{16 \div \boxed{8}}{24 \div \boxed{8}} = \frac{2}{3}$$

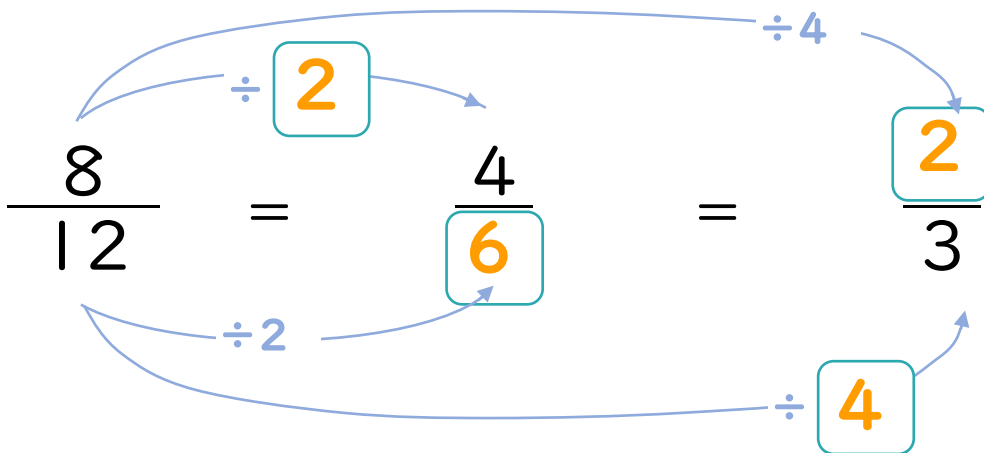
$$\textcircled{2} \quad \frac{8}{18} = \frac{8 \div \boxed{2}}{18 \div \boxed{2}} = \frac{4}{9}$$

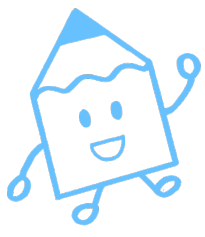
$$\textcircled{5} \quad \frac{18}{48} = \frac{18 \div \boxed{6}}{48 \div \boxed{6}} = \frac{3}{8}$$

$$\textcircled{3} \quad \frac{36}{42} = \frac{36 \div \boxed{6}}{42 \div \boxed{6}} = \frac{6}{7}$$

$$\textcircled{6} \quad \frac{25}{30} = \frac{25 \div \boxed{5}}{30 \div \boxed{5}} = \frac{5}{6}$$

2  にあてはまる数を書きましょう。(うすい字はなぞりましょう。)





# 分数のたし算とひき算 14

【約分】分母と分子を同じ数でわる

4

日にち： 月 日

名まえ

1  にあてはまる数を書きましょう。(うすい字はなぞりましょう。)

$$\textcircled{1} \quad \frac{14}{21} = \frac{14 \div \boxed{7}}{21 \div \boxed{7}} = \frac{2}{3}$$

$$\textcircled{4} \quad \frac{10}{12} = \frac{10 \div \boxed{2}}{12 \div \boxed{2}} = \frac{5}{6}$$

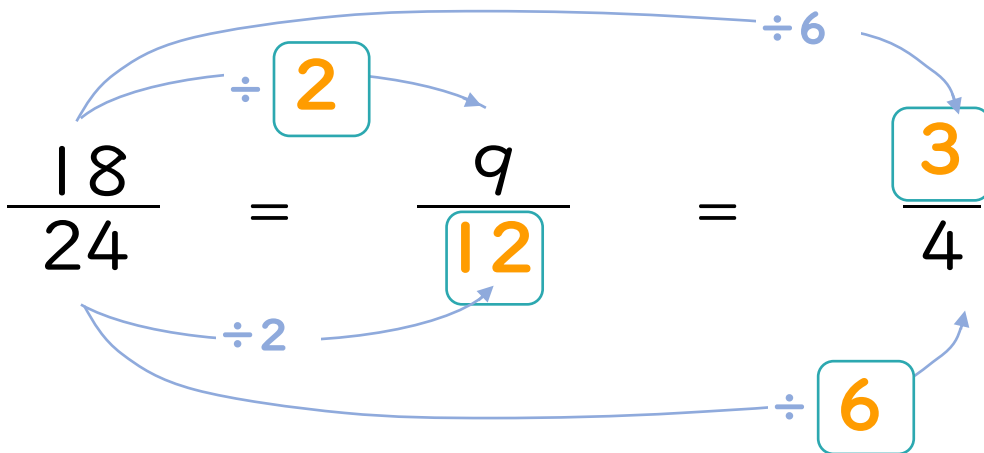
$$\textcircled{2} \quad \frac{15}{24} = \frac{15 \div \boxed{3}}{24 \div \boxed{3}} = \frac{5}{8}$$

$$\textcircled{5} \quad \frac{28}{32} = \frac{28 \div \boxed{4}}{32 \div \boxed{4}} = \frac{7}{8}$$

$$\textcircled{3} \quad \frac{24}{54} = \frac{24 \div \boxed{6}}{54 \div \boxed{6}} = \frac{4}{9}$$

$$\textcircled{6} \quad \frac{32}{40} = \frac{32 \div \boxed{8}}{40 \div \boxed{8}} = \frac{4}{5}$$

2  にあてはまる数を書きましょう。(うすい字はなぞりましょう。)





# 分数のたし算とひき算 14

【約分】分母と分子を同じ数でわる



日にち：            月            日

名まえ

1  にあてはまる数を書きましょう。(うすい字はなぞりましょう。)

$$\textcircled{1} \quad \frac{6}{18} = \frac{6 \div \boxed{6}}{18 \div \boxed{6}} = \frac{1}{3}$$

$$\textcircled{4} \quad \frac{15}{24} = \frac{15 \div \boxed{3}}{24 \div \boxed{3}} = \frac{5}{8}$$

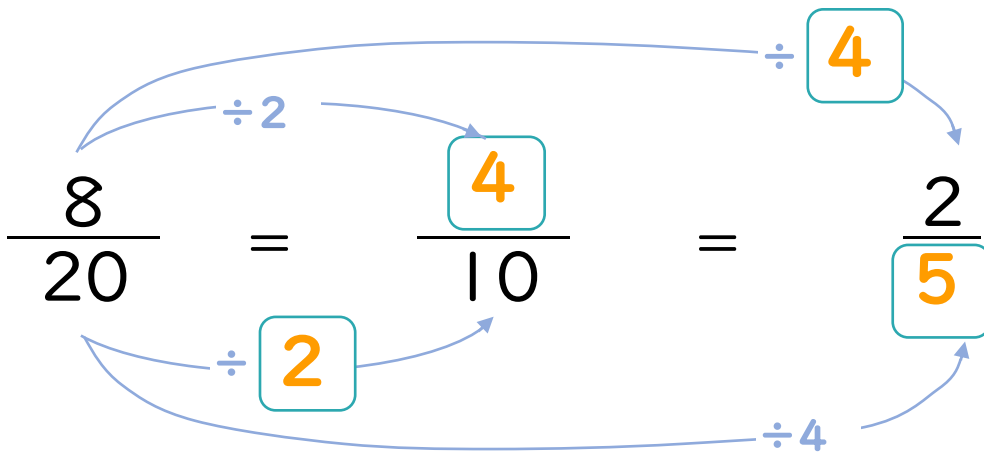
$$\textcircled{2} \quad \frac{8}{16} = \frac{8 \div \boxed{8}}{16 \div \boxed{8}} = \frac{1}{2}$$

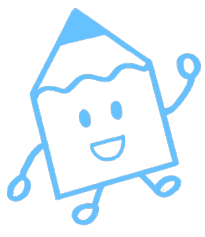
$$\textcircled{5} \quad \frac{12}{20} = \frac{12 \div \boxed{4}}{20 \div \boxed{4}} = \frac{3}{5}$$

$$\textcircled{3} \quad \frac{14}{18} = \frac{14 \div \boxed{2}}{18 \div \boxed{2}} = \frac{7}{9}$$

$$\textcircled{6} \quad \frac{20}{35} = \frac{20 \div \boxed{5}}{35 \div \boxed{5}} = \frac{4}{7}$$

2  にあてはまる数を書きましょう。(うすい字はなぞりましょう。)





# 分数のたし算とひき算 14

【約分】分母と分子を同じ数でわる



日にち：            月            日

名まえ

1  にあてはまる数を書きましょう。(うすい字はなぞりましょう。)

$$\textcircled{1} \quad \frac{14}{21} = \frac{14 \div \boxed{7}}{21 \div \boxed{7}} = \frac{2}{3}$$

$$\textcircled{4} \quad \frac{35}{40} = \frac{35 \div \boxed{5}}{40 \div \boxed{5}} = \frac{7}{8}$$

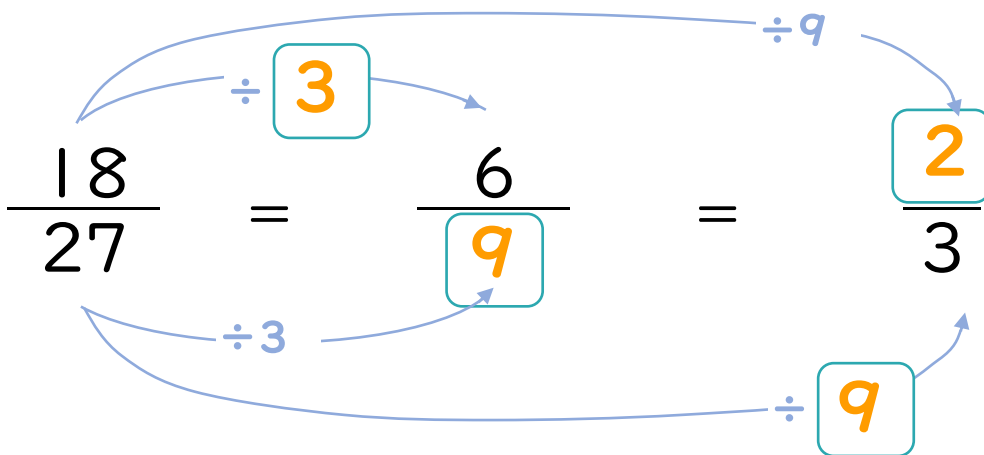
$$\textcircled{2} \quad \frac{20}{24} = \frac{20 \div \boxed{4}}{24 \div \boxed{4}} = \frac{5}{6}$$

$$\textcircled{5} \quad \frac{18}{24} = \frac{18 \div \boxed{6}}{24 \div \boxed{6}} = \frac{3}{4}$$

$$\textcircled{3} \quad \frac{72}{81} = \frac{72 \div \boxed{9}}{81 \div \boxed{9}} = \frac{8}{9}$$

$$\textcircled{6} \quad \frac{16}{72} = \frac{16 \div \boxed{8}}{72 \div \boxed{8}} = \frac{2}{9}$$

2  にあてはまる数を書きましょう。(うすい字はなぞりましょう。)





# 分数のたし算とひき算 14

【約分】分母と分子を同じ数でわる



日にち：            月            日

名まえ \_\_\_\_\_

1  にあてはまる数を書きましょう。(うすい字はなぞりましょう。)

$$\textcircled{1} \quad \frac{54}{63} = \frac{54 \div \boxed{9}}{63 \div \boxed{9}} = \frac{6}{7}$$

$$\textcircled{4} \quad \frac{18}{27} = \frac{18 \div \boxed{9}}{27 \div \boxed{9}} = \frac{2}{3}$$

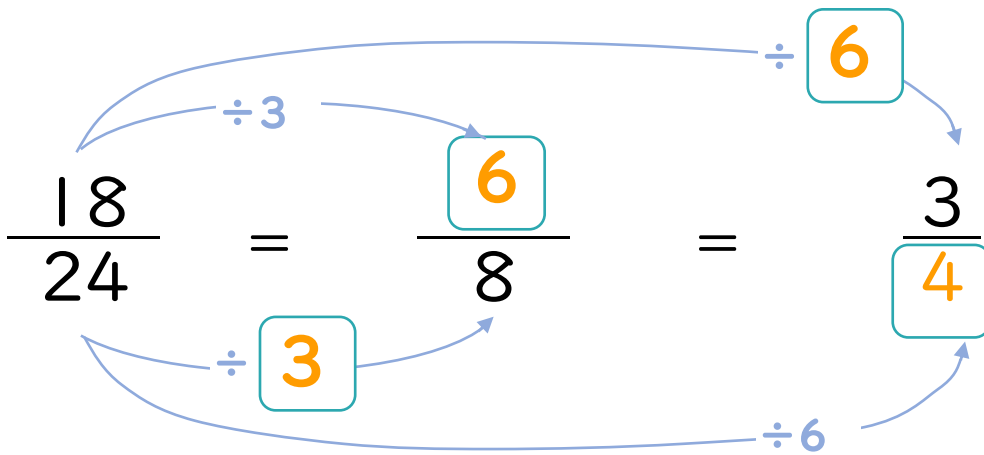
$$\textcircled{2} \quad \frac{8}{18} = \frac{8 \div \boxed{2}}{18 \div \boxed{2}} = \frac{4}{9}$$

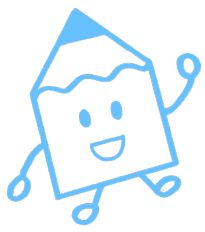
$$\textcircled{5} \quad \frac{30}{42} = \frac{30 \div \boxed{6}}{42 \div \boxed{6}} = \frac{5}{7}$$

$$\textcircled{3} \quad \frac{24}{40} = \frac{24 \div \boxed{8}}{40 \div \boxed{8}} = \frac{3}{5}$$

$$\textcircled{6} \quad \frac{20}{32} = \frac{20 \div \boxed{4}}{32 \div \boxed{4}} = \frac{5}{8}$$

2  にあてはまる数を書きましょう。(うすい字はなぞりましょう。)





# 分数のたし算とひき算 14

【約分】分母と分子を同じ数でわる



日にち：            月            日

名まえ

1  にあてはまる数を書きましょう。

$$\textcircled{1} \quad \frac{24}{56} = \frac{24 \div \boxed{8}}{56 \div \boxed{8}} = \frac{3}{7}$$

$$\textcircled{4} \quad \frac{27}{36} = \frac{27 \div \boxed{9}}{36 \div \boxed{9}} = \frac{3}{4}$$

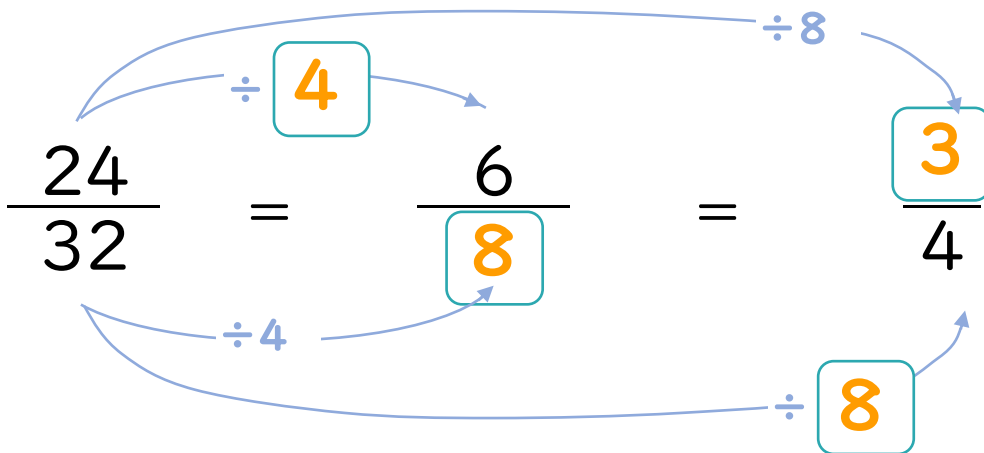
$$\textcircled{2} \quad \frac{24}{54} = \frac{24 \div \boxed{6}}{54 \div \boxed{6}} = \frac{4}{9}$$

$$\textcircled{5} \quad \frac{10}{16} = \frac{10 \div \boxed{2}}{16 \div \boxed{2}} = \frac{5}{8}$$

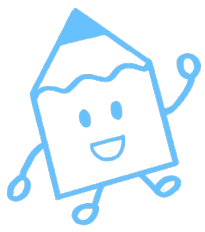
$$\textcircled{3} \quad \frac{12}{30} = \frac{12 \div \boxed{6}}{30 \div \boxed{6}} = \frac{2}{5}$$

$$\textcircled{6} \quad \frac{18}{21} = \frac{18 \div \boxed{3}}{21 \div \boxed{3}} = \frac{6}{7}$$

2  にあてはまる数を書きましょう。







# 分数のたし算とひき算 14

【約分】分母と分子を同じ数でわる



日にち：            月            日

名まえ

1  にあてはまる数を書きましょう。

$$\textcircled{1} \quad \frac{32}{36} = \frac{32 \div \boxed{4}}{36 \div \boxed{4}} = \frac{8}{9}$$

$$\textcircled{4} \quad \frac{18}{45} = \frac{18 \div \boxed{9}}{45 \div \boxed{9}} = \frac{2}{5}$$

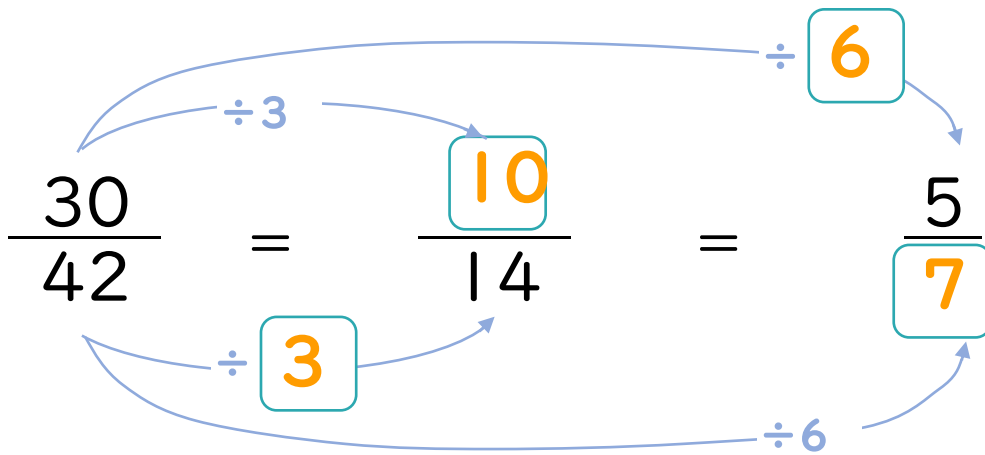
$$\textcircled{2} \quad \frac{35}{42} = \frac{35 \div \boxed{7}}{42 \div \boxed{7}} = \frac{5}{6}$$

$$\textcircled{5} \quad \frac{8}{14} = \frac{8 \div \boxed{2}}{14 \div \boxed{2}} = \frac{4}{7}$$

$$\textcircled{3} \quad \frac{6}{9} = \frac{6 \div \boxed{3}}{9 \div \boxed{3}} = \frac{2}{3}$$

$$\textcircled{6} \quad \frac{18}{48} = \frac{18 \div \boxed{6}}{48 \div \boxed{6}} = \frac{3}{8}$$

2  にあてはまる数を書きましょう。





# 分数のたし算とひき算 14

【約分】分母と分子を同じ数でわる



日にち： 月 日

名まえ

1  にあてはまる数を書きましょう。

$$\textcircled{1} \quad \frac{7}{28} = \frac{7 \div \boxed{7}}{28 \div \boxed{7}} = \frac{1}{4}$$

$$\textcircled{4} \quad \frac{14}{35} = \frac{14 \div \boxed{7}}{35 \div \boxed{7}} = \frac{2}{5}$$

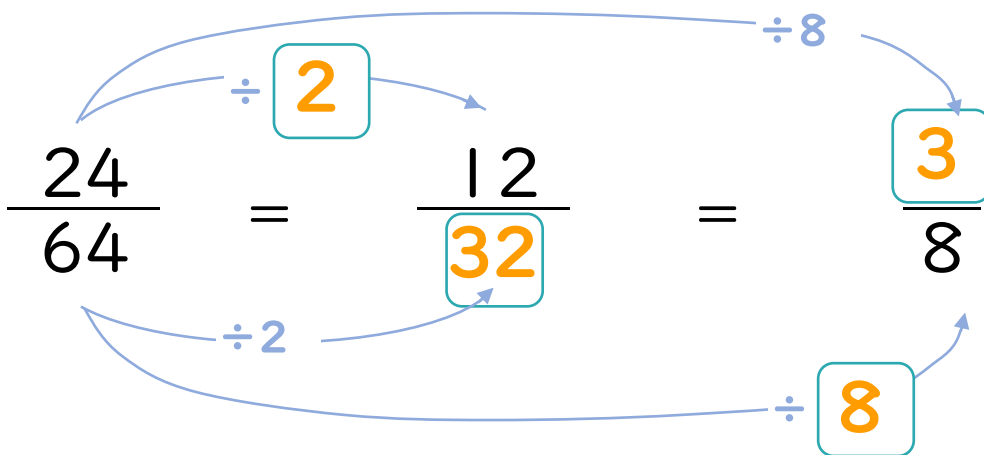
$$\textcircled{2} \quad \frac{12}{16} = \frac{12 \div \boxed{4}}{16 \div \boxed{4}} = \frac{3}{4}$$

$$\textcircled{5} \quad \frac{21}{24} = \frac{21 \div \boxed{3}}{24 \div \boxed{3}} = \frac{7}{8}$$

$$\textcircled{3} \quad \frac{16}{18} = \frac{16 \div \boxed{2}}{18 \div \boxed{2}} = \frac{8}{9}$$

$$\textcircled{6} \quad \frac{10}{45} = \frac{10 \div \boxed{5}}{45 \div \boxed{5}} = \frac{2}{9}$$

2  にあてはまる数を書きましょう。





# 分数のたし算とひき算 14

【約分】分母と分子を同じ数でわる



日にち：            月            日

名まえ \_\_\_\_\_

1  にあてはまる数を書きましょう。

$$\textcircled{1} \quad \frac{10}{35} = \frac{10 \div \boxed{5}}{35 \div \boxed{5}} = \frac{2}{7}$$

$$\textcircled{4} \quad \frac{14}{18} = \frac{14 \div \boxed{2}}{18 \div \boxed{2}} = \frac{7}{9}$$

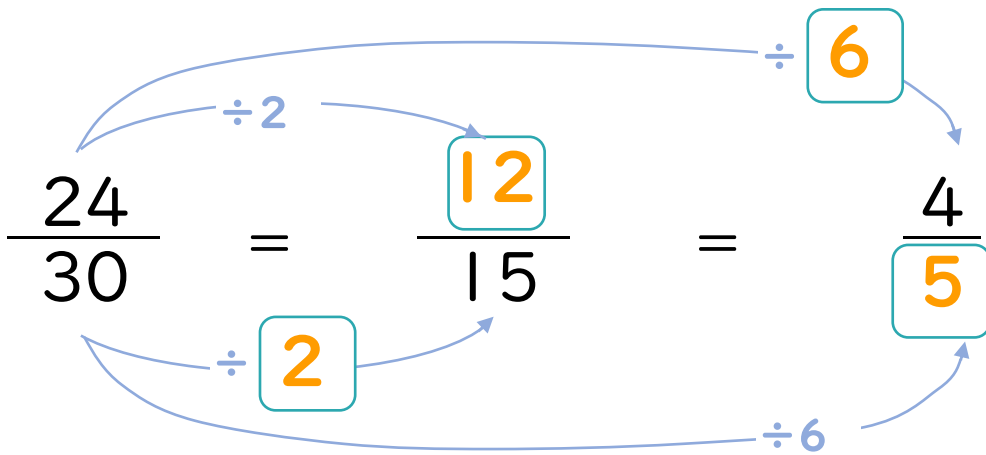
$$\textcircled{2} \quad \frac{27}{72} = \frac{27 \div \boxed{9}}{72 \div \boxed{9}} = \frac{3}{8}$$

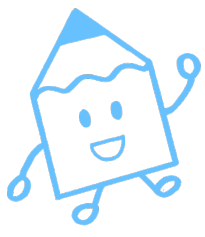
$$\textcircled{5} \quad \frac{20}{32} = \frac{20 \div \boxed{4}}{32 \div \boxed{4}} = \frac{5}{8}$$

$$\textcircled{3} \quad \frac{15}{18} = \frac{15 \div \boxed{3}}{18 \div \boxed{3}} = \frac{5}{6}$$

$$\textcircled{6} \quad \frac{9}{12} = \frac{9 \div \boxed{3}}{12 \div \boxed{3}} = \frac{3}{4}$$

2  にあてはまる数を書きましょう。





# 分数のたし算とひき算 14

【約分】分母と分子を同じ数でわる



日にち：            月            日

名まえ

1  にあてはまる数を書きましょう。

$$\textcircled{1} \quad \frac{4}{6} = \frac{4 \div \boxed{2}}{6 \div \boxed{2}} = \frac{2}{3}$$

$$\textcircled{4} \quad \frac{40}{48} = \frac{40 \div \boxed{8}}{48 \div \boxed{8}} = \frac{5}{6}$$

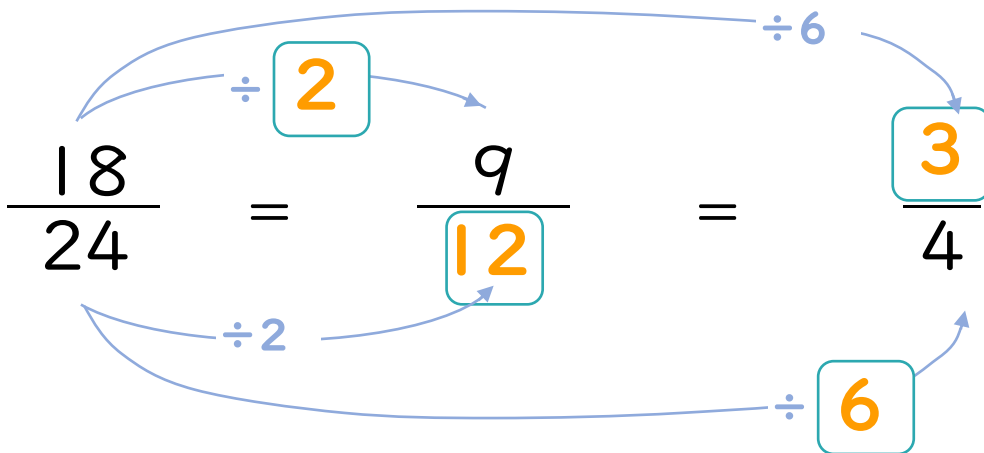
$$\textcircled{2} \quad \frac{40}{45} = \frac{40 \div \boxed{5}}{45 \div \boxed{5}} = \frac{8}{9}$$

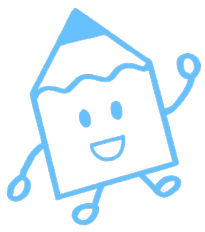
$$\textcircled{5} \quad \frac{8}{10} = \frac{8 \div \boxed{2}}{10 \div \boxed{2}} = \frac{4}{5}$$

$$\textcircled{3} \quad \frac{27}{63} = \frac{27 \div \boxed{9}}{63 \div \boxed{9}} = \frac{3}{7}$$

$$\textcircled{6} \quad \frac{48}{56} = \frac{48 \div \boxed{8}}{56 \div \boxed{8}} = \frac{6}{7}$$

2  にあてはまる数を書きましょう。





# 分数のたし算とひき算 14

【約分】分母と分子を同じ数でわる



日にち：            月            日

名まえ \_\_\_\_\_

1  にあてはまる数を書きましょう。

$$\textcircled{1} \quad \frac{6}{14} = \frac{6 \div \boxed{2}}{14 \div \boxed{2}} = \frac{3}{7}$$

$$\textcircled{4} \quad \frac{21}{35} = \frac{21 \div \boxed{7}}{35 \div \boxed{7}} = \frac{3}{5}$$

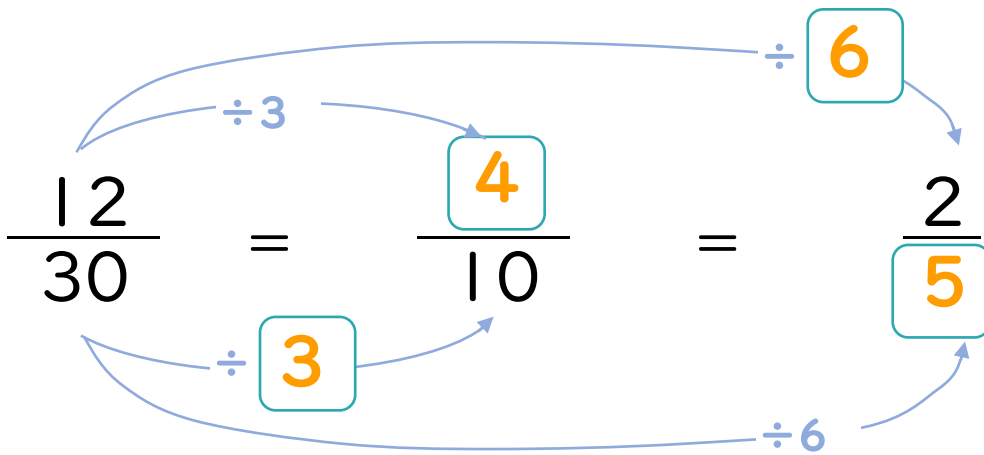
$$\textcircled{2} \quad \frac{32}{40} = \frac{32 \div \boxed{8}}{40 \div \boxed{8}} = \frac{4}{5}$$

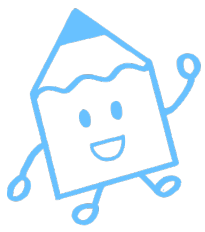
$$\textcircled{5} \quad \frac{12}{54} = \frac{12 \div \boxed{6}}{54 \div \boxed{6}} = \frac{2}{9}$$

$$\textcircled{3} \quad \frac{48}{54} = \frac{48 \div \boxed{6}}{54 \div \boxed{6}} = \frac{8}{9}$$

$$\textcircled{6} \quad \frac{20}{24} = \frac{20 \div \boxed{4}}{24 \div \boxed{4}} = \frac{5}{6}$$

2  にあてはまる数を書きましょう。





# 分数のたし算とひき算 14

【約分】分母と分子を同じ数でわる

# 14

日にち：            月            日

名まえ \_\_\_\_\_

1  にあてはまる数を書きましょう。

$$\textcircled{1} \quad \frac{10}{16} = \frac{10 \div \boxed{2}}{16 \div \boxed{2}} = \frac{5}{8}$$

$$\textcircled{4} \quad \frac{12}{15} = \frac{12 \div \boxed{3}}{15 \div \boxed{3}} = \frac{4}{5}$$

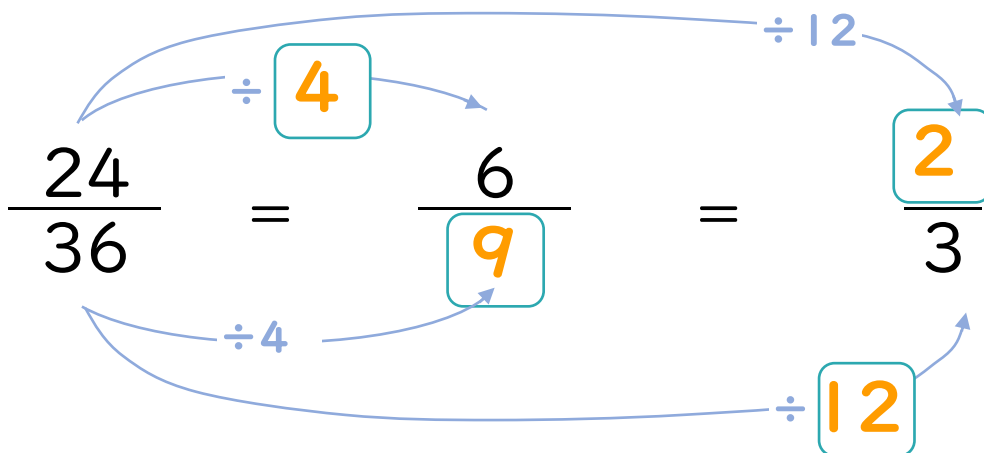
$$\textcircled{2} \quad \frac{21}{27} = \frac{21 \div \boxed{3}}{27 \div \boxed{3}} = \frac{7}{9}$$

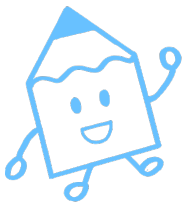
$$\textcircled{5} \quad \frac{21}{28} = \frac{21 \div \boxed{7}}{28 \div \boxed{7}} = \frac{3}{4}$$

$$\textcircled{3} \quad \frac{8}{12} = \frac{8 \div \boxed{4}}{12 \div \boxed{4}} = \frac{2}{3}$$

$$\textcircled{6} \quad \frac{15}{24} = \frac{15 \div \boxed{3}}{24 \div \boxed{3}} = \frac{5}{8}$$

2  にあてはまる数を書きましょう。





# 分数のたし算とひき算 14

【約分】分母と分子を同じ数でわる

# 15

目指せ80点!



名まえ

1  にあてはまる数を書きましょう。(各10点)

$$\textcircled{1} \quad \frac{9}{15} = \frac{9 \div \boxed{3}}{15 \div \boxed{3}} = \frac{3}{5}$$

$$\textcircled{4} \quad \frac{15}{27} = \frac{15 \div \boxed{3}}{27 \div \boxed{3}} = \frac{5}{9}$$

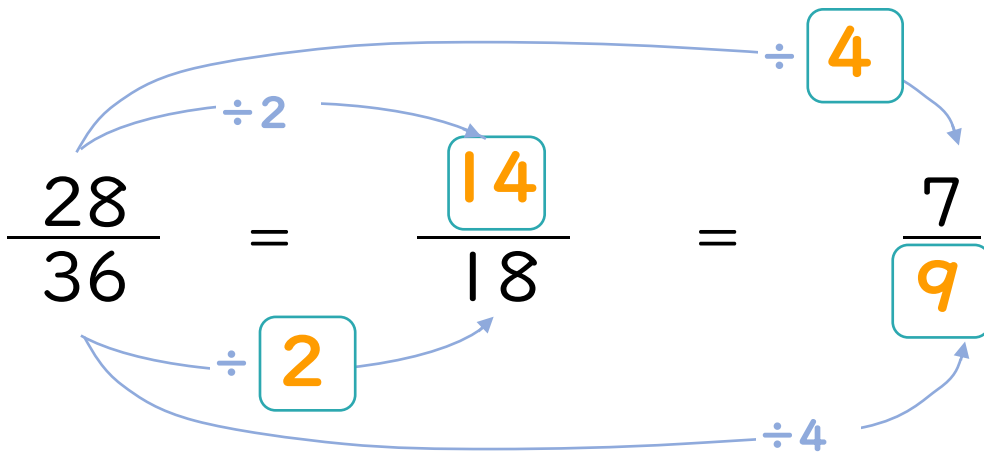
$$\textcircled{2} \quad \frac{24}{28} = \frac{24 \div \boxed{4}}{28 \div \boxed{4}} = \frac{6}{7}$$

$$\textcircled{5} \quad \frac{20}{24} = \frac{20 \div \boxed{4}}{24 \div \boxed{4}} = \frac{5}{6}$$

$$\textcircled{3} \quad \frac{24}{32} = \frac{24 \div \boxed{8}}{32 \div \boxed{8}} = \frac{3}{4}$$

$$\textcircled{6} \quad \frac{14}{16} = \frac{14 \div \boxed{2}}{16 \div \boxed{2}} = \frac{7}{8}$$

2  にあてはまる数を書きましょう。



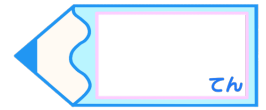


# 分数のたし算とひき算 14

【約分】分母と分子を同じ数でわる

# 16

目指せ80点!



名まえ

1  にあてはまる数を書きましょう。(各10点)

$$\textcircled{1} \quad \frac{15}{27} = \frac{15 \div \boxed{3}}{27 \div \boxed{3}} = \frac{5}{9}$$

$$\textcircled{4} \quad \frac{8}{36} = \frac{8 \div \boxed{4}}{36 \div \boxed{4}} = \frac{2}{9}$$

$$\textcircled{2} \quad \frac{16}{56} = \frac{16 \div \boxed{8}}{56 \div \boxed{8}} = \frac{2}{7}$$

$$\textcircled{5} \quad \frac{30}{35} = \frac{30 \div \boxed{5}}{35 \div \boxed{5}} = \frac{6}{7}$$

$$\textcircled{3} \quad \frac{8}{12} = \frac{8 \div \boxed{4}}{12 \div \boxed{4}} = \frac{2}{3}$$

$$\textcircled{6} \quad \frac{18}{48} = \frac{18 \div \boxed{6}}{48 \div \boxed{6}} = \frac{3}{8}$$

2  にあてはまる数を書きましょう。

