

小数のかけ算 18

◎ かけ算のくふう (順番)



日にち： 月 日

名まえ _____

・次の式をくふうして計算しましょう。(うすい字はなぞりましょう)

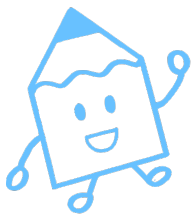
$$\begin{aligned} \textcircled{1} \quad 2.5 \times 0.7 \times 8 &= 2.5 \times 8 \times 0.7 \\ &= 20 \times \\ &= \end{aligned}$$

$$\begin{aligned} \textcircled{2} \quad 2.5 \times 2.1 \times 8 &= \\ &= \\ &= \end{aligned}$$

$$\begin{aligned} \textcircled{3} \quad 4 \times 0.6 \times 2.5 &= \\ &= \\ &= \end{aligned}$$

$$\begin{aligned} \textcircled{4} \quad 1.25 \times 1.7 \times 8 &= \\ &= \\ &= \end{aligned}$$





小数のかけ算 18

◎ かけ算のくふう (順番)



日にち： 月 日

名まえ _____

・次の式をくふうして計算しましょう。(うすい字はなぞりましょう)

$$\begin{aligned} \textcircled{1} \quad 2.5 \times 0.7 \times 8 &= 2.5 \times 8 \times 0.7 \\ &= 20 \times 0.7 \\ &= 14 \end{aligned}$$

$$\begin{aligned} \textcircled{2} \quad 2.5 \times 2.1 \times 8 &= 2.5 \times 8 \times 2.1 \\ &= 20 \times 2.1 \\ &= 42 \end{aligned}$$

$$\begin{aligned} \textcircled{3} \quad 4 \times 0.6 \times 2.5 &= 4 \times 2.5 \times 0.6 \\ &= 10 \times 0.6 \\ &= 6 \end{aligned}$$

$$\begin{aligned} \textcircled{4} \quad 1.25 \times 1.7 \times 8 &= 1.25 \times 8 \times 1.7 \\ &= 10 \times 1.7 \\ &= 17 \end{aligned}$$

