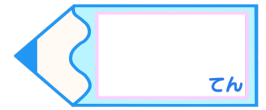


分数のたし算とひき算2

● 分母と分子に同じ数をかける

15

目指せ80点!



名まえ

1 にあてはまる数を書きましょう。(各10点)

$$\textcircled{1} \quad \frac{2}{5} = \frac{2 \times \square}{5 \times \square} = \frac{6}{15}$$

$$\textcircled{4} \quad \frac{4}{7} = \frac{4 \times \square}{7 \times \square} = \frac{12}{21}$$

$$\textcircled{2} \quad \frac{4}{9} = \frac{4 \times \square}{9 \times \square} = \frac{24}{54}$$

$$\textcircled{5} \quad \frac{3}{8} = \frac{3 \times \square}{8 \times \square} = \frac{27}{72}$$

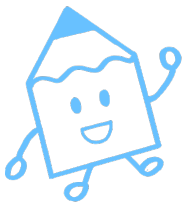
$$\textcircled{3} \quad \frac{7}{8} = \frac{7 \times \square}{8 \times \square} = \frac{14}{16}$$

$$\textcircled{6} \quad \frac{5}{6} = \frac{5 \times \square}{6 \times \square} = \frac{15}{18}$$

2 にあてはまる数を書きましょう。(各20点)

$$\textcircled{1} \quad \frac{7}{9} = \frac{\square}{18} = \frac{21}{\square} = \frac{\square}{\square} = \frac{\square}{\square}$$

$$\textcircled{2} \quad \frac{2}{7} = \frac{\square}{14} = \frac{6}{\square} = \frac{\square}{\square} = \frac{\square}{\square}$$

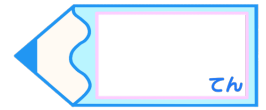


分数のたし算とひき算2

● 分母と分子に同じ数をかける

15

目指せ80点!



名まえ

1 にあてはまる数を書きましょう。(各10点)

$$\textcircled{1} \quad \frac{2}{5} = \frac{2 \times 3}{5 \times 3} = \frac{6}{15}$$

$$\textcircled{4} \quad \frac{4}{7} = \frac{4 \times 3}{7 \times 3} = \frac{12}{21}$$

$$\textcircled{2} \quad \frac{4}{9} = \frac{4 \times 6}{9 \times 6} = \frac{24}{54}$$

$$\textcircled{5} \quad \frac{3}{8} = \frac{3 \times 9}{8 \times 9} = \frac{27}{72}$$

$$\textcircled{3} \quad \frac{7}{8} = \frac{7 \times 2}{8 \times 2} = \frac{14}{16}$$

$$\textcircled{6} \quad \frac{5}{6} = \frac{5 \times 3}{6 \times 3} = \frac{15}{18}$$

2 にあてはまる数を書きましょう。(各20点)

$$\textcircled{1} \quad \frac{7}{9} = \frac{14}{18} = \frac{21}{27} = \frac{28}{36} = \frac{35}{45}$$

$$\textcircled{2} \quad \frac{2}{7} = \frac{4}{14} = \frac{6}{21} = \frac{8}{28} = \frac{10}{35}$$