

小数のかけ算20

◎ かけ算のくふう
(足し引きに分ける)

16

点数 点

目指せ75点!

名まえ _____

・次の式をくふうして計算しましょう。(各25点)

① $10.3 \times 7 =$

=

=

=

② $14.9 \times 4 =$

=

=

=

③ $9.7 \times 2.6 + 0.3 \times 2.6 =$

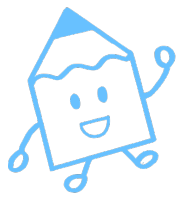
=

=

④ $1.2 \times 4.7 - 1.2 \times 2.7 =$

=

=



小数のかけ算20

◎ かけ算のくふう
(足し引きに分ける)

16

点数 点

目指せ75点!

名まえ _____

・次の式をくふうして計算しましょう。(各25点)

$$\begin{aligned} \textcircled{1} \quad 10.3 \times 7 &= (10 + 0.3) \times 7 \\ &= 10 \times 7 + 0.3 \times 7 \\ &= 70 + 2.1 \\ &= 72.1 \end{aligned}$$

$$\begin{aligned} \textcircled{2} \quad 14.9 \times 4 &= (15 - 0.1) \times 4 \\ &= 15 \times 4 - 0.1 \times 4 \\ &= 60 - 0.4 \\ &= 59.6 \end{aligned}$$

$$\begin{aligned} \textcircled{3} \quad 9.7 \times 2.6 + 0.3 \times 2.6 &= (9.7 + 0.3) \times 2.6 \\ &= 10 \times 2.6 \\ &= 26 \end{aligned}$$

$$\begin{aligned} \textcircled{4} \quad 1.2 \times 4.7 - 1.2 \times 2.7 &= 1.2 \times (4.7 - 2.7) \\ &= 1.2 \times 2 \\ &= 2.4 \end{aligned}$$

