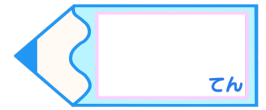


# 分数のたし算とひき算2

● 分母と分子に同じ数をかける

16

目指せ80点!



名まえ

1  にあてはまる数を書きましょう。(各10点)

$$\textcircled{1} \quad \frac{5}{7} = \frac{5 \times \square}{7 \times \square} = \frac{20}{28}$$

$$\textcircled{4} \quad \frac{1}{6} = \frac{1 \times \square}{6 \times \square} = \frac{7}{42}$$

$$\textcircled{2} \quad \frac{7}{8} = \frac{7 \times \square}{8 \times \square} = \frac{35}{40}$$

$$\textcircled{5} \quad \frac{2}{9} = \frac{2 \times \square}{9 \times \square} = \frac{16}{72}$$

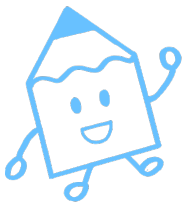
$$\textcircled{3} \quad \frac{3}{4} = \frac{3 \times \square}{4 \times \square} = \frac{9}{12}$$

$$\textcircled{6} \quad \frac{5}{6} = \frac{5 \times \square}{6 \times \square} = \frac{45}{54}$$

2  にあてはまる数を書きましょう。(各20点)

$$\textcircled{1} \quad \frac{6}{7} = \frac{\square}{14} = \frac{18}{\square} = \frac{\square}{\square} = \frac{\square}{\square}$$

$$\textcircled{2} \quad \frac{4}{9} = \frac{\square}{18} = \frac{12}{\square} = \frac{\square}{\square} = \frac{\square}{\square}$$

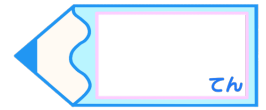


# 分数のたし算とひき算2

● 分母と分子に同じ数をかける

16

目指せ80点!



名まえ

1  にあてはまる数を書きましょう。(各10点)

$$\textcircled{1} \quad \frac{5}{7} = \frac{5 \times 4}{7 \times 4} = \frac{20}{28}$$

$$\textcircled{4} \quad \frac{1}{6} = \frac{1 \times 7}{6 \times 7} = \frac{7}{42}$$

$$\textcircled{2} \quad \frac{7}{8} = \frac{7 \times 5}{8 \times 5} = \frac{35}{40}$$

$$\textcircled{5} \quad \frac{2}{9} = \frac{2 \times 8}{9 \times 8} = \frac{16}{72}$$

$$\textcircled{3} \quad \frac{3}{4} = \frac{3 \times 3}{4 \times 3} = \frac{9}{12}$$

$$\textcircled{6} \quad \frac{5}{6} = \frac{5 \times 9}{6 \times 9} = \frac{45}{54}$$

2  にあてはまる数を書きましょう。(各20点)

$$\textcircled{1} \quad \frac{6}{7} = \frac{12}{14} = \frac{18}{21} = \frac{24}{28} = \frac{30}{35}$$

$$\textcircled{2} \quad \frac{4}{9} = \frac{8}{18} = \frac{12}{27} = \frac{16}{36} = \frac{20}{45}$$