

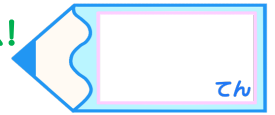


分数のたし算とひき算5

●【通分】分母に公約数がある

16

目指せ75点!



名まえ _____

・ () の中の分数を^{つうぶん}通分して、分母をそろえましょう。(各25点)

① $(3\frac{2}{3}, 3\frac{3}{5})$

$3\frac{2}{3} =$, $3\frac{3}{5} =$

② $(1\frac{4}{7}, 2\frac{8}{35})$

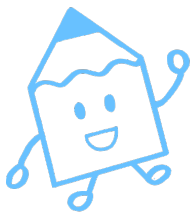
$1\frac{4}{7} =$, $2\frac{8}{35}$

③ $(\frac{3}{8}, \frac{9}{10})$

$\frac{3}{8} =$, $\frac{9}{10} =$

④ $(\frac{4}{9}, \frac{5}{6})$

$\frac{4}{9} =$, $\frac{5}{6} =$

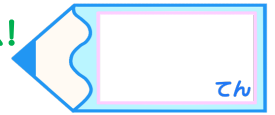


分数のたし算とひき算5

●【通分】分母に公約数がある

16

目指せ75点!



名まえ _____

・ () の中の分数を^{つうぶん}通分して、分母をそろえましょう。(各25点)

① $(3\frac{2}{3}, 3\frac{3}{5})$

$$3\frac{2}{3} = 3\frac{2 \times 5}{3 \times 5} = 3\frac{10}{15}, \quad 3\frac{3}{5} = 3\frac{3 \times 3}{5 \times 3} = 3\frac{9}{15}$$

② $(1\frac{4}{7}, 2\frac{8}{35})$

$$1\frac{4}{7} = 1\frac{4 \times 5}{7 \times 5} = 2\frac{20}{35}, \quad 2\frac{8}{35}$$

③ $(\frac{3}{8}, \frac{9}{10})$

$$\frac{3}{8} = \frac{3 \times 5}{8 \times 5} = \frac{15}{40}, \quad \frac{9}{10} = \frac{9 \times 4}{10 \times 4} = \frac{36}{40}$$

④ $(\frac{4}{9}, \frac{5}{6})$

$$\frac{4}{9} = \frac{4 \times 2}{9 \times 2} = \frac{8}{18}, \quad \frac{5}{6} = \frac{5 \times 3}{6 \times 3} = \frac{15}{18}$$