



比4

● かけ算で
等しい比を作ろう (整数)



日にち： 月 日

名まえ _____

- ・ 等しい比を作りましょう。(うすい字はなぞりましょう。)

① $3 : 7 = 9 : 21$

② $5 : 8 = 40 : 64$

③ $2 : 5 = 10 : \square$

④ $4 : 9 = \square : 81$





比4

● かけ算で
等しい比を作ろう (整数)



日にち： 月 日

名まえ _____

・ 等しい比を作りましょう。(うすい字はなぞりましょう。)

① $3 : 2 = 6 : \boxed{4}$

Diagram showing the process of creating an equivalent ratio. A bracket above the numbers 3 and 2 is labeled "×2", with an arrow pointing to the number 6. A bracket below the numbers 2 and 4 is labeled "×2", with an arrow pointing to the number 4.

② $4 : 5 = \boxed{} : 15$

Diagram showing the process of creating an equivalent ratio. A bracket above the numbers 4 and 5 is labeled "×3", with an arrow pointing to the empty box. A bracket below the numbers 5 and 15 is labeled "×3", with an arrow pointing to the number 15.

③ $1 : 8 = 5 : \boxed{}$

Diagram showing the process of creating an equivalent ratio. A bracket above the numbers 1 and 8 is labeled "×5", with an arrow pointing to the number 5. A bracket below the numbers 8 and the empty box is labeled "×5", with an arrow pointing to the empty box.

④ $7 : 3 = \boxed{} : 30$

Diagram showing the process of creating an equivalent ratio. A bracket above the numbers 7 and 3 is labeled "×10", with an arrow pointing to the empty box. A bracket below the numbers 3 and 30 is labeled "×10", with an arrow pointing to the number 30.





比4

● かけ算で
等しい比を作ろう (整数)



日にち： 月 日

名まえ _____

- ・ 等しい比を作りましょう。(うすい字はなぞりましょう。)

① $1 : 3 = 5 : 15$

② $3 : 7 = \square : 21$

③ $6 : 5 = 12 : \square$

④ $1 : 3 = \square : 33$





比4

● かけ算で
等しい比を作ろう (整数)



日にち： 月 日

名まえ _____

・ 等しい比を作しましょう。

① $6 : 5 = 12 : \square$

Diagram showing the process of finding an equivalent ratio. A bracket above the numbers 6 and 5 is labeled $\times 2$, with an arrow pointing to the number 12. A bracket below the numbers 5 and \square is labeled $\times 2$, with an arrow pointing to the empty box.

② $9 : 4 = \square : 12$

Diagram showing the process of finding an equivalent ratio. A bracket above the numbers 9 and 4 is labeled $\times 3$, with an arrow pointing to the empty box. A bracket below the numbers 4 and 12 is labeled $\times 3$, with an arrow pointing to the number 12.

③ $3 : 1 = 27 : \square$

Diagram showing the process of finding an equivalent ratio. A bracket above the numbers 3 and 1 is labeled $\times 9$, with an arrow pointing to the number 27. A bracket below the numbers 1 and \square is labeled $\times 9$, with an arrow pointing to the empty box.

④ $2 : 3 = \square : 39$

Diagram showing the process of finding an equivalent ratio. A bracket above the numbers 2 and 3 is labeled $\times 13$, with an arrow pointing to the empty box. A bracket below the numbers 3 and 39 is labeled $\times 13$, with an arrow pointing to the number 39.





比4

● かけ算で
等しい比を作ろう (整数)



日にち： 月 日

名まえ _____

・ 等しい比を作りましょう。(うすい字はなぞりましょう。)

① $1 : 4 = 4 : \square$

Diagram showing the process of finding an equivalent ratio. An arrow labeled $\times 4$ points from the first term (1) to the second term (4). Another arrow labeled $\times 4$ points from the second term (4) to the empty box.

② $5 : 6 = 45 : 54$

Diagram showing the process of finding an equivalent ratio. An arrow labeled $\times 9$ points from the first term (5) to the second term (45). Another arrow labeled $\times 9$ points from the second term (6) to the third term (54).

③ $4 : 7 = 24 : \square$

④ $3 : 10 = \square : 30$





比4

● かけ算で
等しい比を作ろう (整数)



日にち： 月 日

名まえ _____

・ 等しい比を作りましょう。(うすい字はなぞりましょう。)

① $2 : 5 = 4 : 10$

Diagram showing the derivation of the equivalent ratio: $2 \times 2 = 4$ and $5 \times 2 = 10$.

② $1 : 8 = \square : 64$

Diagram showing the derivation of the equivalent ratio: $1 \times 8 = 8$ and $8 \times 8 = 64$.

③ $7 : 3 = 63 : \square$

④ $4 : 9 = \square : 72$





比4

● かけ算で
等しい比を作ろう (整数)



日にち： 月 日

名まえ _____

・ 等しい比を作りましょう。

① $1 : 7 = 9 : \square$

② $4 : 3 = \square : 18$

③ $2 : 5 = 14 : \square$

④ $1 : 2 = \square : 20$





比4

● かけ算で
等しい比を作ろう (整数)



日にち： 月 日

名まえ _____

・ 等しい比を作りましょう。

① $2 : 5 = 10 : \square$

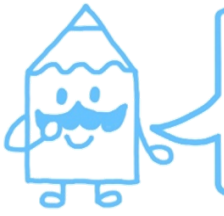
(Diagram: A bracket above the numbers 2 and 5 is labeled '×5'. An arrow points from this bracket to the number 10, indicating that 2 is multiplied by 5 to get 10.)

② $1 : 4 = \square : 16$

③ $3 : 7 = 18 : \square$

④ $3 : 1 = \square : 12$





比4

● かけ算で
等しい比を作ろう (整数)



日にち： 月 日

名まえ _____

・ 等しい比を作りましょう。

$$\textcircled{1} \quad 3 : 2 = 12 : \square$$

$$\textcircled{2} \quad 2 : 5 = \square : 15$$

$$\textcircled{3} \quad 6 : 11 = 24 : \square$$

$$\textcircled{4} \quad 2 : 3 = \square : 30$$





比 4

● かけ算で
等しい比を作ろう (整数)



日にち： 月 日

名まえ _____

・ 等しい比を作しましょう。

$$\textcircled{1} \quad 2 : 3 = 10 : \square$$

$$\textcircled{2} \quad 6 : 7 = \square : 70$$

$$\textcircled{3} \quad 2 : 5 = 14 : \square$$

$$\textcircled{4} \quad 12 : 11 = \square : 44$$

$$\textcircled{5} \quad 1 : 4 = \square : 32$$





比4

● かけ算で
等しい比を作ろう (整数)



日にち： 月 日

名まえ _____

・ 等しい比を作しましょう。

$$\textcircled{1} \quad 2 : 7 = 6 : \square$$

$$\textcircled{2} \quad 1 : 8 = \square : 48$$

$$\textcircled{3} \quad 4 : 5 = 28 : \square$$

$$\textcircled{4} \quad 9 : 4 = \square : 20$$

$$\textcircled{5} \quad 11 : 12 = 22 : \square$$





比 4

● かけ算で
等しい比を作ろう (整数)

12

日にち： 月 日

名まえ _____

・ 等しい比を作しましょう。

$$\textcircled{1} \quad 4 : 5 = 8 : \square$$

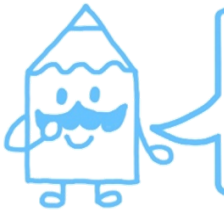
$$\textcircled{2} \quad 3 : 1 = \square : 12$$

$$\textcircled{3} \quad 7 : 3 = 21 : \square$$

$$\textcircled{4} \quad 9 : 20 = \square : 40$$

$$\textcircled{5} \quad 8 : 13 = \square : 26$$





比4

● かけ算で
等しい比を作ろう (整数)

13

日にち： 月 日

名まえ _____

・ 等しい比を作しましょう。

$$\textcircled{1} \quad 3 : 5 = 24 : \square$$

$$\textcircled{2} \quad 2 : 3 = \square : 27$$

$$\textcircled{3} \quad 1 : 12 = 3 : \square$$

$$\textcircled{4} \quad 8 : 7 = \square : 49$$

$$\textcircled{5} \quad 15 : 11 = 30 : \square$$





比 4

● かけ算で
等しい比を作ろう (整数)



日にち： 月 日

名まえ _____

・ 等しい比を作しましょう。

$$\textcircled{1} \quad 5 : 2 = 30 : \square$$

$$\textcircled{2} \quad 2 : 9 = \square : 90$$

$$\textcircled{3} \quad 6 : 7 = 42 : \square$$

$$\textcircled{4} \quad 3 : 4 = \square : 12$$

$$\textcircled{5} \quad 20 : 11 = \square : 22$$





比4

● かけ算で
等しい比を作ろう (整数)

15

目指せ80点!



名まえ

・ 等しい比を作しましょう。(各20点)

$$\textcircled{1} \quad 4 : 5 = 24 : \square$$

$$\textcircled{2} \quad 2 : 9 = \square : 99$$

$$\textcircled{3} \quad 3 : 7 = 24 : \square$$

$$\textcircled{4} \quad 10 : 3 = \square : 15$$

$$\textcircled{5} \quad 6 : 13 = \square : 39$$





比4

● かけ算で
等しい比を作ろう (整数)

16

目指せ80点!



名まえ _____

・ 等しい比を作りましょう。(各20点)

$$\textcircled{1} \quad 4 : 5 = 36 : \square$$

$$\textcircled{2} \quad 1 : 7 = \square : 28$$

$$\textcircled{3} \quad 2 : 9 = 12 : \square$$

$$\textcircled{4} \quad 4 : 11 = \square : 33$$

$$\textcircled{5} \quad 9 : 5 = 90 : \square$$





比 4

● かけ算で
等しい比を作ろう (整数)



日にち： 月 日

名まえ _____

- ・ 等しい比を作りましょう。(うすい字はなぞりましょう。)

① $3 : 7 = 9 : 21$

② $5 : 8 = 40 : 64$

③ $2 : 5 = 10 : 25$

④ $4 : 9 = 36 : 81$





比4

● かけ算で
等しい比を作ろう (整数)



日にち： 月 日

名まえ _____

・ 等しい比を作りましょう。(うすい字はなぞりましょう。)

① $3 : 2 = 6 : 4$

Diagram showing the transformation of the ratio 3:2 to 6:4. A bracket above the numbers 3 and 2 is labeled "×2", with an arrow pointing to the number 6. A bracket below the numbers 2 and 4 is labeled "×2", with an arrow pointing to the number 4. The number 4 is enclosed in a light blue box.

② $4 : 5 = 12 : 15$

Diagram showing the transformation of the ratio 4:5 to 12:15. A bracket above the numbers 4 and 5 is labeled "×3", with an arrow pointing to the number 12. A bracket below the numbers 5 and 15 is labeled "×3", with an arrow pointing to the number 15. The number 12 is enclosed in a light blue box.

③ $1 : 8 = 5 : 40$

Diagram showing the transformation of the ratio 1:8 to 5:40. A bracket above the numbers 1 and 8 is labeled "×5", with an arrow pointing to the number 5. A bracket below the numbers 8 and 40 is labeled "×5", with an arrow pointing to the number 40. The number 40 is enclosed in a light blue box.

④ $7 : 3 = 70 : 30$

Diagram showing the transformation of the ratio 7:3 to 70:30. A bracket above the numbers 7 and 3 is labeled "×10", with an arrow pointing to the number 70. A bracket below the numbers 3 and 30 is labeled "×10", with an arrow pointing to the number 30. The number 70 is enclosed in a light blue box.





比4

● かけ算で
等しい比を作ろう (整数)



日にち： 月 日

名まえ _____

- ・ 等しい比を作りましょう。(うすい字はなぞりましょう。)

① $1 : 3 = 5 : 15$

② $3 : 7 = 9 : 21$

③ $6 : 5 = 12 : 10$

④ $1 : 3 = 11 : 33$





比4

● かけ算で
等しい比を作ろう (整数)



日にち： 月 日

名まえ _____

・ 等しい比を作しましょう。

① $6 : 5 = 12 : 10$

② $9 : 4 = 27 : 12$

③ $3 : 1 = 27 : 9$

④ $2 : 3 = 26 : 39$





比 4

● かけ算で
等しい比を作ろう (整数)



日にち： 月 日

名まえ _____

- ・ 等しい比を作りましょう。(うすい字はなぞりましょう。)

① $1 : 4 = 4 : 16$

② $5 : 6 = 45 : 54$

③ $4 : 7 = 24 : 42$

④ $3 : 10 = 9 : 30$





比4

● かけ算で
等しい比を作ろう (整数)



日にち： 月 日

名まえ _____

- ・ 等しい比を作りましょう。(うすい字はなぞりましょう。)

① $2 : 5 = 4 : 10$

② $1 : 8 = 8 : 64$

③ $7 : 3 = 63 : 27$

④ $4 : 9 = 32 : 72$





比 4

● かけ算で
等しい比を作ろう (整数)



日にち： 月 日

名まえ _____

・ 等しい比を作しましょう。

① $1 : 7 = 9 : 63$

② $4 : 3 = 24 : 18$

③ $2 : 5 = 14 : 35$

④ $1 : 2 = 10 : 20$





比4

● かけ算で
等しい比を作ろう (整数)



日にち： 月 日

名まえ _____

・ 等しい比を作しましょう。

① $2 : 5 = 10 : 25$

② $1 : 4 = 4 : 16$

③ $3 : 7 = 18 : 42$

④ $3 : 1 = 36 : 12$





比4

● かけ算で
等しい比を作ろう (整数)



日にち： 月 日

名まえ _____

・ 等しい比を作しましょう。

① $3 : 2 = 12 : 8$

Diagram showing the derivation of the equivalent ratio 12:8 from 3:2. A bracket above the numbers 3 and 2 is labeled "×4", with an arrow pointing to the number 12. A bracket below the numbers 2 and 8 is labeled "×4", with an arrow pointing to the number 8.

② $2 : 5 = 6 : 15$

Diagram showing the derivation of the equivalent ratio 6:15 from 2:5. A bracket above the numbers 2 and 5 is labeled "×3", with an arrow pointing to the number 6. A bracket below the numbers 5 and 15 is labeled "×3", with an arrow pointing to the number 15.

③ $6 : 11 = 24 : 44$

Diagram showing the derivation of the equivalent ratio 24:44 from 6:11. A bracket above the numbers 6 and 11 is labeled "×4", with an arrow pointing to the number 24. A bracket below the numbers 11 and 44 is labeled "×4", with an arrow pointing to the number 44.

④ $2 : 3 = 20 : 30$

Diagram showing the derivation of the equivalent ratio 20:30 from 2:3. A bracket above the numbers 2 and 3 is labeled "×10", with an arrow pointing to the number 20. A bracket below the numbers 3 and 30 is labeled "×10", with an arrow pointing to the number 30.





比4

● かけ算で
等しい比を作ろう (整数)



日にち： 月 日

名まえ _____

・ 等しい比を作りましょう。

$$\textcircled{1} \quad 2 : 3 = 10 : 15$$

$\xrightarrow{\times 5}$ (from 2 to 10) and $\xrightarrow{\times 5}$ (from 3 to 15)

$$\textcircled{2} \quad 6 : 7 = 60 : 70$$

$\xrightarrow{\times 10}$ (from 6 to 60) and $\xrightarrow{\times 10}$ (from 7 to 70)

$$\textcircled{3} \quad 2 : 5 = 14 : 35$$

$\xrightarrow{\times 7}$ (from 2 to 14) and $\xrightarrow{\times 7}$ (from 5 to 35)

$$\textcircled{4} \quad 12 : 11 = 48 : 44$$

$\xrightarrow{\times 4}$ (from 12 to 48) and $\xrightarrow{\times 4}$ (from 11 to 44)

$$\textcircled{5} \quad 1 : 4 = 8 : 32$$

$\xrightarrow{\times 8}$ (from 1 to 8) and $\xrightarrow{\times 8}$ (from 4 to 32)





比 4

● かけ算で
等しい比を作ろう (整数)



日にち： 月 日

名まえ _____

・ 等しい比を作しましょう。

① $2 : 7 = 6 : 21$

Diagram showing multiplication by 3: $2 \times 3 = 6$ and $7 \times 3 = 21$.

② $1 : 8 = 6 : 48$

Diagram showing multiplication by 6: $1 \times 6 = 6$ and $8 \times 6 = 48$.

③ $4 : 5 = 28 : 35$

Diagram showing multiplication by 7: $4 \times 7 = 28$ and $5 \times 7 = 35$.

④ $9 : 4 = 45 : 20$

Diagram showing multiplication by 5: $9 \times 5 = 45$ and $4 \times 5 = 20$.

⑤ $11 : 12 = 22 : 24$

Diagram showing multiplication by 2: $11 \times 2 = 22$ and $12 \times 2 = 24$.





比4

● かけ算で
等しい比を作ろう (整数)



日にち： 月 日

名まえ _____

・ 等しい比を作しましょう。

① $4 : 5 = 8 : 10$

Diagram showing the derivation of the second ratio from the first. An arrow labeled $\times 2$ points from 4 to 8, and another arrow labeled $\times 2$ points from 5 to 10.

② $3 : 1 = 36 : 12$

Diagram showing the derivation of the second ratio from the first. An arrow labeled $\times 12$ points from 3 to 36, and another arrow labeled $\times 12$ points from 1 to 12.

③ $7 : 3 = 21 : 9$

Diagram showing the derivation of the second ratio from the first. An arrow labeled $\times 3$ points from 7 to 21, and another arrow labeled $\times 3$ points from 3 to 9.

④ $9 : 20 = 18 : 40$

Diagram showing the derivation of the second ratio from the first. An arrow labeled $\times 2$ points from 9 to 18, and another arrow labeled $\times 2$ points from 20 to 40.

⑤ $8 : 13 = 16 : 26$

Diagram showing the derivation of the second ratio from the first. An arrow labeled $\times 2$ points from 8 to 16, and another arrow labeled $\times 2$ points from 13 to 26.





比4

● かけ算で
等しい比を作ろう (整数)



日にち： 月 日

名まえ _____

・ 等しい比を作りましょう。

$$\textcircled{1} \quad 3 : 5 = 24 : 40$$

$\xrightarrow{\times 8}$ (from 3 to 24)
 $\xrightarrow{\times 8}$ (from 5 to 40)

$$\textcircled{2} \quad 2 : 3 = 18 : 27$$

$\xrightarrow{\times 9}$ (from 2 to 18)
 $\xrightarrow{\times 9}$ (from 3 to 27)

$$\textcircled{3} \quad 1 : 12 = 3 : 36$$

$\xrightarrow{\times 3}$ (from 1 to 3)
 $\xrightarrow{\times 3}$ (from 12 to 36)

$$\textcircled{4} \quad 8 : 7 = 56 : 49$$

$\xrightarrow{\times 7}$ (from 8 to 56)
 $\xrightarrow{\times 7}$ (from 7 to 49)

$$\textcircled{5} \quad 15 : 11 = 30 : 22$$

$\xrightarrow{\times 2}$ (from 15 to 30)
 $\xrightarrow{\times 2}$ (from 11 to 22)





比 4

● かけ算で
等しい比を作ろう (整数)



日にち： 月 日

名まえ _____

・ 等しい比を作りましょう。

$$\textcircled{1} \quad 5 : 2 = 30 : 12$$

×6

$$\textcircled{2} \quad 2 : 9 = 20 : 90$$

×10

$$\textcircled{3} \quad 6 : 7 = 42 : 49$$

×7

$$\textcircled{4} \quad 3 : 4 = 9 : 12$$

×3

$$\textcircled{5} \quad 20 : 11 = 40 : 22$$

×2





比 4
 ● かけ算で
 等しい比を作ろう (整数)



目指せ80点!



名まえ _____

・ 等しい比を作しましょう。(各20点)

① $4 : 5 = 24 : 30$

Diagram showing multiplication by 6: $4 \times 6 = 24$ and $5 \times 6 = 30$.

② $2 : 9 = 22 : 99$

Diagram showing multiplication by 11: $2 \times 11 = 22$ and $9 \times 11 = 99$.

③ $3 : 7 = 24 : 56$

Diagram showing multiplication by 8: $3 \times 8 = 24$ and $7 \times 8 = 56$.

④ $10 : 3 = 50 : 15$

Diagram showing multiplication by 5: $10 \times 5 = 50$ and $3 \times 5 = 15$.

⑤ $6 : 13 = 18 : 39$

Diagram showing multiplication by 3: $6 \times 3 = 18$ and $13 \times 3 = 39$.





比4
 ● かけ算で
 等しい比を作ろう (整数)



目指せ80点!



名まえ

・ 等しい比を作しましょう。(各20点)

① $4 : 5 = 36 : 45$

Diagram showing multiplication by 9: $4 \times 9 = 36$ and $5 \times 9 = 45$.

② $1 : 7 = 4 : 28$

Diagram showing multiplication by 4: $1 \times 4 = 4$ and $7 \times 4 = 28$.

③ $2 : 9 = 12 : 54$

Diagram showing multiplication by 6: $2 \times 6 = 12$ and $9 \times 6 = 54$.

④ $4 : 11 = 12 : 33$

Diagram showing multiplication by 3: $4 \times 3 = 12$ and $11 \times 3 = 33$.

⑤ $9 : 5 = 90 : 50$

Diagram showing multiplication by 10: $9 \times 10 = 90$ and $5 \times 10 = 50$.

