



分数のかけ算 6

● 分数同士の積 (約分2回)



日にち： 月 日

名まえ

・ 次の計算をしましょう。(うすい字はしっかりなぞりましょう。)

$$\textcircled{1} \quad \frac{4}{15} \times \frac{5}{4} = \frac{\cancel{4}^1 \times \cancel{5}_1}{\cancel{15}_3 \times \cancel{4}_1} = \frac{1 \times 1}{3 \times 1} =$$

$$\textcircled{2} \quad \frac{12}{7} \times \frac{14}{15} =$$

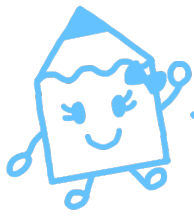
$$\textcircled{3} \quad \frac{2}{25} \times \frac{5}{8} =$$

$$\textcircled{4} \quad \frac{5}{12} \times \frac{3}{5} =$$

$$\textcircled{5} \quad \frac{7}{6} \times \frac{9}{14} =$$

$$\textcircled{6} \quad \frac{16}{3} \times \frac{21}{20} =$$

$$\textcircled{7} \quad \frac{18}{7} \times \frac{7}{30} =$$



分数のかけ算 6

● 分数同士の積 (約分2回)



日にち： 月 日

名まえ _____

・次の計算をしましょう。(うすい字はしっかりなぞりましょう。)

$$\textcircled{1} \quad \frac{4}{15} \times \frac{5}{4} = \frac{\cancel{4}^1 \times \cancel{5}_1}{\cancel{15}_3 \times \cancel{4}_1} = \frac{1 \times 1}{3 \times 1} = \frac{1}{3}$$

$$\textcircled{2} \quad \frac{12}{7} \times \frac{14}{15} = \frac{\cancel{12}^4 \times \cancel{14}^2}{\cancel{7}_1 \times \cancel{15}_5} = \frac{4 \times 2}{1 \times 5} = \frac{8}{5} \left(1 \frac{3}{5} \right)$$

$$\textcircled{3} \quad \frac{2}{25} \times \frac{5}{6} = \frac{\cancel{2}^1 \times \cancel{5}_1}{\cancel{25}_5 \times \cancel{6}_3} = \frac{1 \times 1}{5 \times 3} = \frac{1}{15}$$

$$\textcircled{4} \quad \frac{5}{12} \times \frac{3}{5} = \frac{\cancel{5}^1 \times \cancel{3}_1}{\cancel{12}_4 \times \cancel{5}_1} = \frac{1 \times 1}{4 \times 1} = \frac{1}{4}$$

$$\textcircled{5} \quad \frac{7}{6} \times \frac{9}{14} = \frac{\cancel{7}^1 \times \cancel{9}^3}{\cancel{6}_2 \times \cancel{14}_2} = \frac{1 \times 3}{2 \times 2} = \frac{3}{4}$$

$$\textcircled{6} \quad \frac{16}{3} \times \frac{21}{20} = \frac{\cancel{16}^4 \times \cancel{21}^7}{\cancel{3}_1 \times \cancel{20}_5} = \frac{4 \times 7}{1 \times 5} = \frac{28}{5} \left(5 \frac{3}{5} \right)$$

$$\textcircled{7} \quad \frac{18}{7} \times \frac{7}{30} = \frac{\cancel{18}^3 \times \cancel{7}_1}{\cancel{7}_1 \times \cancel{30}_5} = \frac{3 \times 1}{1 \times 5} = \frac{3}{5}$$

